

Megger electrical test instruments

New for 2008

**17th Edition
ready testers**



**Automatic
certification system**
MFT1553 On-site

Active output checking
Test box MTB7671

**Current
clamp multimeter**
DCM300 range

Megger

WWW.MEGGER.COM



MFT1553 On-site Multifunction tester with Bluetooth® and certification software

The fastest selling multifunction installation tester now offers the facility for completing 17th Edition certificates on-site on a mobile device, shortening the loop from test to invoice.



MTB7671 Meter test box

Works with all testers actively measuring its output to confirm it is operating within the limits set by the regulations BS7671, BS EN 61557 and the IEE On-site guide as well as checking its readings.



DCM330 Fork multimeter

Much more than a simple clamp meter the DCM330 has non-contact voltage detection as well as multimeter functionality. A must for the tool bag.



MTC300 Test certificate pads

For those electricians who still like to make out their certificates manually Megger has launched a range of test certificate pads, to present a professional image to the client.

Megger test and measurement

It makes sense to specify Megger for all your test and measurement instruments. All the products in this catalogue are ready for the 17th Edition of the Wiring Regulations. Designed and manufactured at our factory in Dover, England as they are, it is easier for our engineers to listen to precisely what professional electricians need, and ensure all our meters are safe to use. You'll find a lot of new products in this catalogue, all designed to suit your precise needs.

We've listened when electricians said they spend hours doing the paperwork when they get back from a job, and now, with the MFT1553 On-site, you can prepare your certificates as you go there on site, so those hours of work are now visible to the client.

The warranty of many products can be **upgraded to three years FREE**, simply by registering the purchase of the product, and to save your time and cash, many Megger test and measurement products are supplied with a FREE calibration certificate and you will also get a tough carry case to keep them clean and safe.

Part P and electrical safety

Part P of the Building Regulations requires that electrical installation work in dwellings needs to meet the requirements of the 16th (soon to be 17th) Edition wiring regulations (BS7671).

Contractors normally demonstrate compliance to BS7671 by self-certification through an approved competent person scheme authorised by the Government. Several organisations have been authorised to assess such competence.

A second way does not require the electrical contractor to join an approved scheme but to submit a building notice to the local authority building control for notifiable work which the local authority will inspect. They will charge for this service.

And test equipment?

Your existing 16th and 17th Edition test equipment complies with both the old and new legislation. The relevant standards for test equipment are IEC61010 and EN61557.

A contractor entering into an approved assessment scheme will require a full set of calibrated test instrumentation, including insulation and continuity, earth loop impedance and RCD testers.

You can find up to date information at www.megger.com/PartP, or from the Department for Communities and Local Government at www.communities.gov.uk.

17th Edition of the Wiring Regulations

The new 17th Edition of the wiring regulations is due to be implemented on the 1st June 2008. There are a significant number of changes, additions and deletions, both big and small.

To align the British and IEC numbering system sections 6 (Special installations or locations) and 7 (Inspection and testing) change places. The new section 7 will now include sections on: "Marinas and similar locations", "Exhibitions, Shows and Stands", "Solar Voltaic Power Supply Systems", "Mobile and transportable units", "Temporary electrical installations" and "Floor and ceiling heating systems".

The good news for anyone doing Testing and Inspection, - there are **no changes that prevent your current Megger testers being used**.

A brief summary of current instrument requirements is detailed below:

The most important change is to the insulation test limits for SELV, PELV and systems of less than 500 V

	New 17th Edition	Old 16th Edition
Insulation test 250 V	≥0.5 MΩ	≥0.25 MΩ
voltage range 500 V	≥1.0 MΩ	≥0.5 MΩ
1000 V	≥1.0 MΩ	≥1.0 MΩ

If a meter has a "built-in" PASS/FAIL indicator for insulation values to the old 16th Edition, the limits must be adjusted to comply with the 17th Edition.

Other instrument requirements have not changed.

Continuity testing

Test current	I = ≥200 mA	No change
Test voltage	V = 4 V to 24 V	No change

Earth loop testing

Not specified. However a resolution of 0.01 Ω is generally regarded as adequate, to a minimum of 100 Ω for TT installations as defined in note 2 of the new table 41.5 – "Max values of earth fault loop impedance to ensure RCD operation of non-delayed RCDs to BS EN 61008 and BS EN 61009".

RCD testing

½ x I, 1 x I at 0° and 180° and 5 x I at 0° and 180°
30 mA, 100 mA, 300 mA and 500 mA.

There are now more references in the 17th Edition to EN 61557, the European Norm for test instruments for use on electrical installations.

By ensuring the manufacturer states the instrument meets this standard you cannot go far wrong. And of course Megger testers all meet the requirements of the 17th Edition.

Megger testers are all 17th Edition ready now.

Scottish Building Standards

On 1st May 2005 new Building Standards legislation came into operation in Scotland providing for the appointment of *Approved Certifiers*, qualified professionals who have the authority to certify work for Building Warrant purposes. For the electrical installation industry, the *Scheme Providers* appointed to approve *Approved Certifiers* and *Approved Bodies* (firms employing *Approved Certifiers*) are SELECT (The Electrical Contractors' Association of Scotland) and the NICEIC.

If you are an *Approved Certifier* of Construction (Electrical Installations to BS 7671), you can certify that the job meets the appropriate standards immediately, provided you have ensured that appropriate checks were made. A certification by an *Approved Certifier* means that the *Verifier* (normally, the Local Authority) MUST accept that the electrical installation complies with the building regulations. Once the *Verifier* is notified that an *Approved Certifier* is to be used, the *Certifier* must make sure that the electrical installation complies with the building regulations. The *verifier* does not inspect it.

This imposes duties and responsibilities on *Certifiers*. The Certificate of Construction (Electrical Installations to BS 7671) certifies compliance with the building regulations, and this may involve many aspects of the installation that in the past were not always considered to be part of the remit of persons who signed electrical compliance certificates.

17th Edition of the Wiring Regulations

NEW Multifunction tester MFT series



MFT1552 now includes Auto RCD function



MFT testers come ready for work with the calibration certificate too

Loop testing

- Non-tripping 0.01 Ω loop test
- Supply voltage and polarity indication
- High current loop test
- Phase-Phase, Phase-Neutral and Phase-Earth loop tests
- PFC measurement

RCD testing

- Auto RCD testing MFT1552 and MFT1553 only
- RCD ramp test to measure RCD trip current
- Standard RCDs
- Delayed/selective RCDs
- DC sensitive RCDs

Voltage testing

- AC - DC Voltmeter ± 500 V ac/dc range

Continuity testing

- 200 mA continuity from 0.01 Ω to 99.9 kΩ
- Automatic continuity testing
- Fast continuity Zap buzzer
- Variable threshold in 6 steps from 2 Ω to 100 Ω
- Lead null storage even when switched off

Insulation testing

- Insulation test at 250 V, 500 V and 1000 V
- Voltage warning alarm
- Auto discharge
- Safety lockout
- Bluetooth down loading MFT1553 only
- Rapid certification
- Filling out forms there and then on-site

Large liquid crystal display

Offers high speed analogue clarity with digital stability

Test lead panel

An interlocking sliding shutter system to prevent hazardous lead combinations

Know How



The days of walking back and forth to a fuse board when RCD testing are over.

MFT1552 and MFT1553 will do the five tests (Z, I and 5I plus 0° and 180°) automatically. Once connected to a convenient socket and set to the correct trip setting, allowing for normal, selective, or d.c. sensitive RCDs, pressing the test button starts the test sequence. You stand by the RCD to re-set it when it trips on the I and 5I tests.

The results are retrieved by pressing the test button. Repeated pressing of the button will display each test result in turn.

It won't go bang when...

- connected across phases
- it gets dropped or "bounced"
- it's used in the rain
- accidentally testing live circuits
- selecting the wrong test range

The MFT series retains all the essential features necessary for testing domestic, commercial and industrial fixed wiring, and now includes the following:

- PFC measurement on both loop test ranges
- Selectable fault (Touch) voltage 25 V or 50 V inhibit
- Fault (Touch) voltage display
- New Megger lead set with all instruments

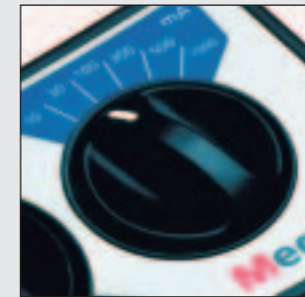
The MFT test lead panel provides:

- An interlocking sliding shutter system to prevent hazardous lead combinations
- Simple colour labelling for easy test lead connection
- Keyed plug and probe connectors for added security
- IP54 weatherproofing
- Panel location stops leads fouling while testing

Illuminated switched probe not supplied with the MFT1501

A fully featured test probe allows for single-handed operation and test status indication.

- Remote test button for single-handed operation
- Red / Green Status LED
- A Red LED indicates a voltage present on an insulation range. A Green LED indicates the instrument is displaying a valid test result



10 to 1000 mA RCD testing



Colour coding of even the test buttons makes the MFT so easy to use.



Auto RCD testing makes testing so easy



Test lead panel with interlock to prevent hazardous lead combinations

- LED torch built-in provides illumination to the probe tip, providing essential lighting in low light conditions
- Three interchangeable probe tips; standard shrouded, removable shrouded and an extended probe tip

		Multifunction testers			
		MFT1501/2	MFT1502/2	MFT1552	MFT1553
Insulation testing ranges	1000 V insulation	■	■	■	■
	500 V insulation	■	■	■	■
	250 V insulation	■	■	■	■
Continuity test features	200 mA continuity	■	■	■	■
	Lead resistance zeroing	■	■	■	■
	Buzzer	■	■	■	■
		■	■	■	■
Loop testing	Loop test max range in Ω	3000	3000	3000	3000
	High current loop	■	■	■	■
	P-N loop test	■	■	■	■
	P-E loop test	■	■	■	■
	3 Phase P-P loop test	■	■	■	■
	Low current 15 mA non-trip	■	■	■	■
	PSCC indicator	■	■	■	■
RCD testing	Selectable RCD current test	■	■	■	■
	RCD ramp test	■	■	■	■
	Auto RCD testing	■	■	■	■
	Tests DC sensitive RCDs	■	■	■	■
	0° + 180° phase angle	■	■	■	■
Touch voltage	25 V/50 V	■	■	■	■
	Display	■	■	■	■
Display	Auto shut down	■	■	■	■
	Large easy to read LCD display	■	■	■	■
	Megger analogue arc	■	■	■	■
	Backlight	■	■	■	■
Intelligent safety system	Test lockout	■	■	■	■
	Safe contact detector	■	■	■	■
	Default voltmeter	■	■	■	■
Voltage range	500 V	■	■	■	■
	Switched probe facility	■	■	■	■
Additional benefits	Live circuit warning	■	■	■	■
	Auto discharge	■	■	■	■
	Weather and dust proof to IP54	■	■	■	■
	Free calibration certificate	■	■	■	■
	3 year warranty	■	■	■	■
	Bluetooth downloading	■	■	■	■

For the MFT package that fills out certificates go to pages 18 and 19.

Part P kit PPK series



PPK210 for a complete Part P kit

Special features on all testers

- Thick rubber armoured case
- Clear colour coded ranges
- Large easy to read displays
- Super grip test leads with lock on croc clips
- Tough
- Easy to use
- 3-phase safe
- Weatherproof
- Hands free testing
- Hard carry case

Megger PPK210

Comprises the MIT310 insulation and continuity tester which tests at 250 V, 500 V and 1000 V, and the LRCD210 Loop and RCD tester. The kit comes complete with test leads, carry and storage case and free calibration certificates.

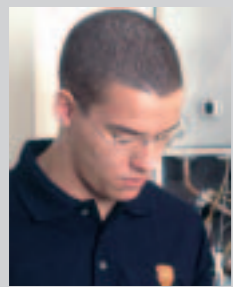
The MIT310 insulation tester and LRCD210 loop and RCD tester will take the bashing that testers receive when they are on site. They are rubber armoured, and have an integral solid lid to cover the display.

Choose the PPK210 Part P kit to certify an installation to Part P of the Building Regulations. The included MIT310 insulation tester provides all required insulation test voltages, enabling testing of SELV and PELV circuits at 250V d.c. and standard installation wiring at 500 V d.c.

Megger PPK220

Comprises the MIT320 insulation and continuity tester and the LRCD220 Loop and RCD tester. PPK220 gives you all the capability of the PPK210 and adds extra functionality.

Know How



The separation of live and dead testing that you find with the PPK test kits is really helpful if electrical testing is not your mainline of business.

Selecting the tester for live circuits reminds you of the safety implications of working with live circuits. Meanwhile you know you are working with the best when you insulation test with a Megger tester.

MIT320 Insulation and continuity tester

- Buzzer disable
- Continuity limit alarm
- Insulation limit alarm
- Frequency measurement
- Resistance measurement
- Backlit display
- Backlit ranges
- Remote switch probe

LRCD220 Loop and RCD tester

- Auto RCD testing
- 1000 mA RCD test capability
- Phase to Phase loop testing
- Phase rotation display

Part P kit			
		PPK210	PPK220
Insulation testing	(see pages 8 and 9 for technical data)	MIT310 MIT320	■
Loop and RCD testing	(see page 7 for technical data)	LRCD210 LRCD220	■
	Megger calibration certificate	■	■
	Full set of test leads	■	■
	Instrument and document carry case	■	■
	Batteries included	■	■
	3 year warranty	■	■

Combined loop and RCD tester LRCD series



Loop and RCD testing in one compact package

The LRCD200 series is the latest generation of combined non-tripping loop test and RCD test instruments. They provide simple, affordable and flexible test tools for electrical contractors testing energised circuits. The instruments are supplied with a free Megger calibration certificate.

Your safety is Megger's number one concern. These instruments have built-in safety features to look after you and the tester –

Both LRCD210 and LRCD220 multifunction testers offer

Loop testing

- Non-tripping 3 wire low current loop test provides measurements from 0.01 Ω to 2 kΩ
- Non-tripping Loop test, RCDs rated 30 mA or greater are not tripped by the loop test, even electronic RCDs.
- High current 2-wire fast loop test (LRCD220 only)
- 415 V Phase to phase loop measurement (LRCD220 only)
- Auto-ranging tests
- PFC calculation and display from the loop test measurement
- Supply voltage display on connection to circuit
- Supply frequency measurement

RCD testing

- 10 mA to 500 mA RCD testing, 1000 mA as well on LRCD220
- ½ I, 1 x I, 5 x I RCD test
- AC, AC selective, DC and DC selective RCD type selection
- 0°/180° selection
- Ramp testing
- 25 V or 50 V Touch voltage selection
- Optional Touch voltage display

- Safety interlock to prevent unsafe connection of the test leads
- Test inhibit, if the supply voltage exceeds 280 V
- 3 phase safe – even when connected across phases, both you and the tester will remain safe
- Touch voltage limits and indication

Loop and RCD testers		LRCD210	LRCD220
Loop test	Non tripping loop test	■	■
	PFC calculation and display	■	■
	Single phase testing	■	■
	Phase to phase testing	■	■
	High current loop test	■	■
	3 phase safe	■	■
	Voltmeter	■	■
RCD test	½ x I test	■	■
	1 x I test	■	■
	5 x I test	■	■
	Touch / contact voltage display	■	■
	Selectable 25/50 V touch voltage	■	■
	10, 30, 100, 300, 500 mA ranges	■	■
	1000 mA	■	■
	AC, AC selective, DC and DC selective RCD tests	■	■
	Automatic RCD testing	■	■
	Selectable phase 0/180	■	■
General test	Ramp test (20 % to 110 %)	■	■
	Frequency	■	■
Mechanical	Phase rotation	■	■
	Backlight	■	■
	Working voltage 230 V	■	■
	Working voltage 110 V and 230 V	■	■
	Free calibration certificate	■	■
	IP54	■	■

Know How



Loop testing at higher currents is still an option. With developments in no-trip loop testing it's easy to forget that the higher current tests can still be used when testing Phase - Neutral, Phase - Phase and on any circuit where an RCD is NOT fitted. Testing is faster, more accurate.

Insulation and continuity tester MIT300 series



MIT320 insulation tester has a large, clear display

The New Megger insulation testers are like no other tester you have used.

The new Megger insulation testers will take the bashing that testers receive when they are on site

They are rubber armoured and have an integral solid lid to cover the display.

The lid has a heavy-duty hinge that locks away underneath when in use, making it easy to use and impossible to lose.

And you don't need to pull out the test leads to shut the lid.

Special Features

- Thick rubber armoured case
- Clear colour coded selectors
- Large, easy to read display
- Super grip test-leads with lock on croc clips
- Tough
- Easy to use
- Safe
- Weatherproof
- USB downloading on MIT330

The Megger MIT insulation testers are easy to use and quick to learn

There are no buried functions, so it is easy to use these new insulation testers.

The colour coding helps test selection, speeding up testing time and helping you identify faults fast.

The quick start guide in the lid keeps all the basic information at hand when you need it.

Your safety is Megger's number one concern

These safety features look after you and the tester –

- Safety interlock to prevent unsafe connection of the test leads
- Safe contact detector keeping you and your tester safe during continuity testing if it's accidentally connected to a live circuit
- Live voltage warning alerts the user to a circuit voltage over 25 V when insulation testing



The MIT320 comes with switched probe and calibration certificate

- Safety lockouts –
 - Prevents continuity testing on live circuits
 - Prevents insulation testing when circuit voltage is greater than 50 V

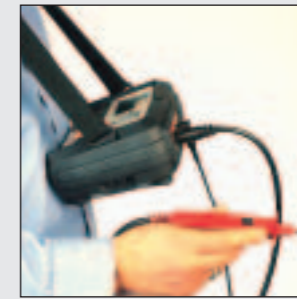
Hands free operation

The Megger MIT is well balanced to hang comfortably from your neck enabling hands free operation when you need it. The continuity test and buzzer start automatically when you connect to a circuit, saving you time.

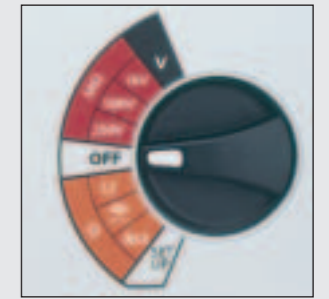
Insulation tests can be started using a switched probe or the test button on the front of the tester.



Tough lid prevents damage to the display



Handy neck strap for hands free operation



Clear range selector for poor light conditions

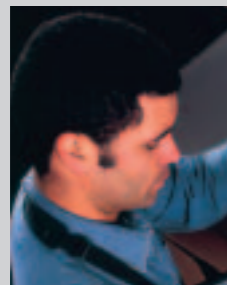


Double hinge keeps screen free from scratches or swings under to snap out of sight

See page 10 and 11 for our new industrial insulation testers

		Insulation testers				
		MIT300	MIT310	MIT320	MIT310A Analogue	MIT330
Insulation testing	250 V	■	■	■	■	■
	500 V	■	■	■	■	■
	1000 V	■	■	■	■	■
	Test range	1000 MΩ	1000 MΩ	1000 MΩ	1000 MΩ	1000 MΩ
Insulation limit alarm 0.01 MΩ to 1000 MΩ						
Continuity testing	Continuity to 100 Ω	■	■	■	■	■
	Continuity buzzer	■	■	■	■	■
	Lead null to 9 Ω	■	■	■	<1/2 Ω	■
	Adjustable buzzer 1 to 100 Ω					
	Audible buzzer disable					
Voltage measurement	Volts AC/DC		600 V	600 V	600 V	600 V
Resistance measurement	10 Ω to 1 MΩ range			■		■
	10 Ω to 2 KΩ range				■	
Features	Voltage warning	■				
	Default voltmeter		■		■	■
	Backlit display			■		■
	Backlight selector ranges			■		■
	Locking test button	■	■	■	■	■
	Auto power-down	■	■	■		■
	Switched test probe			■		■
	Data storage					
	Download via USB port					
	IP54 weatherproof	■	■	■	■	■
	Accepts rechargeable batteries	■	■	■	■	■
	2 wire lead set	■	■	■	■	■
	Free calibration certificate	■	■	■	■	■
3 year warranty	■	■	■	■	■	
Included accessories						

Know How



The best place for a test button is on the probe. By using a switched probe rather than a standard one there is no longer a need to look away from the tester to find the TEST button on the instrument, or use a third hand if both are already holding the probes. Simply press the button already under your finger. Definitely safer and quicker.

Light-weight insulation and continuity tester MIT200 series



MIT200 the pocket sized tester

MIT220 and MIT230 are two of the smallest insulation testers available. Both products have a combination of digital readout and analogue display, using Megger's patented DART display technology. The display includes a clear, accurate digital readout, and an analogue pointer response for evaluating circuit charge and discharge characteristics.

The tough ABS instrument housing is designed to withstand the rigours of hard use, whilst small enough to drop into your pocket when not in use. A low battery warning indicator gives advanced warning of exhausted batteries.

Insulation and Continuity Testers		
	MIT220	MIT230
250 V and 500 V test ranges to 1000 MΩ	■	■
250 V, 500 V and 1000 V test ranges to 1000 MΩ	■	■
Continuity (200 mA) measurement	■	■
Voltage detection	■	■
Intelligent safety system	■	■
Fast buzzer range	■	■
Display backlight	■	■
CATIII 600 V	■	■
IEC61010	■	■

Special Features

- Insulation testing to 1000 MΩ
- Continuity testing at 200 mA down to 0.01 Ω
- Live circuit warning (voltage display) and test inhibit
- Digital/Analogue display
- Alkaline or rechargeable batteries
- -10° C to +55° C operating temperature
- CATIII 600 V
- Conforms to EN61557-1

Continuity testing

- Automatic continuity testing is performed at 200 mA to ensure compliance with international requirements. No need to press the test button
- All instruments will measure up to 100 Ω on continuity, of which 0-10 Ω is performed at greater than 200 mA to meet international electrical testing requirements
- Lead null is possible up to 9.99 Ω of test lead resistance, ensuring the ability to null fused test leads as well as standard leads
- Continuity buzzer
- A continuity buzzer provides a means of rapid cable testing and circuit identification, with voltage protection should you accidentally touch a live circuit
- The buzzer operates at a 5 Ω threshold

Insulation testing

- There is a choice of two or three test voltage ranges providing an ideal solution to most low voltage insulation testing applications
- Insulation testing is possible up to 1000 MΩ on all ranges
- Auto discharge ensures all circuits are safely discharged after testing
- 1000 V insulation test ranges have a high voltage warning prior to test voltage being applied

Industrial maintenance and telecommunications insulation and continuity testers MIT400 series

Special Features

- CATIV 600 V
- TRMS voltage measurement
- Polarisation index (PI) and dielectric absorption ratio (DAR)
- High resistance ranges to 200 GΩ
- Suitable for electrical supply industry, avionics, panel building, railways, motor, cable inspection and street lighting

Insulation testing

- Test voltages - 50 V to 1000 V insulation test voltages available
- Unique 10 V to 100 V variable voltage tester (MIT40X)
- Test lock - Locks insulation test on
- Test voltage display - Actual test voltage is displayed on the smaller digital readout, with the insulation result on the larger digital display
- Analogue arc - Display features an analogue arc to replicate the response of a moving coil display
- PI and DAR - Polarisation Index (PI), Dielectric Absorption Ratio (DAR) and timer functions
- Insulation testing to 200 GΩ
- Silicone leads - High quality flexible silicone test leads prevent measurement errors on higher GΩ ranges
- Test inhibit - prevents testing if voltages in excess of 50 V (or 75 V on telecoms testers) are detected when making insulation tests

MIT430 the most versatile insulation tester ever



- Insulation buzzer - Preset the buzzer to an insulation resistance limit from the setup menu

Continuity testing

- Auto test on circuit contact enables real two handed operation without the need to press the test button, speeding up the operation
- A choice of 200 mA or 20 mA continuity test currents is available. 20 mA test current will considerably increase battery life
- Lead null - Lead resistance compensation (NULL) up to 9 Ω of resistance
- Buzzer - ON-OFF selected by simple push button
- Buzzer limit - Continuity buzzer limit alarm provides adjustment of the maximum resistance the continuity buzzer sounds. This is adjustable from 1 Ω to 20 Ω in 5 steps

	Industrial maintenance insulation and continuity testers					Telecommunications insulation and continuity testers		
	MIT400	MIT410	MIT420	MIT430	MIT40X	MIT480	MIT481	MIT485
250 V, 500 V and 1000 V insulation test	■	■	■	■	■	■	■	■
50 V and 100 V insulation test	■	■	■	■	■	■	■	■
10 V to 100 V in 1 V steps					■			
Resistance to	20 GΩ	100 GΩ	200 GΩ	200 GΩ	20 GΩ	100 GΩ	200 GΩ	200 GΩ
Continuity 0.01 to 200 Ω	■	■	■	■	■	■	■	■
Live circuit warning	50 V	50 V	50 V	50 V	50 V	75 V	75 V	75 V
Polarization Index PI		■	■	■	■		■	■
Dielectric absorption rate DAR		■	■	■	■		■	■
Frequency measurement		■	■	■	■		■	■
Capacitance measurement			■	■	■		■	■
Distance by capacitance							■	■
Data storage			■	■	■		■	■
Bluetooth downloading				■	■		■	■
Safety	CATIV 600 V	CATIV 600 V	CATIV 600 V	CATIV 600 V	CATIV 600 V	CATIV 600 V	CATIV 600 V	CATIV 600 V
FREE calibration certificate	■	■	■	■	■	■	■	■

Sorry we didn't tell you before. You can do non-trip loop testing with only two wires.

2-wire non-tripping loop impedance tester LTW series



The high resolution LTW425 lets you test closer to the source of supply

2 wire testing

The loop test is performed with only 2 test leads. This can be either:

- Phase to Earth
- Phase to Neutral
- Phase to Phase

Testing is simple. There is no need for a third wire which could cause confusion in identifying the part of the circuit under test.

Non-trip loop testing

The LTW series are guaranteed not to trip working RCDs of 30 mA, using the Non-trip loop test.

Noise detection on non-trip tests

The LTW uses sophisticated noise detection circuitry which continually monitors the supply during a loop test to ensure the accuracy of the result has not been affected by electrical noise from plant and services.

Two operational modes are available:

- a) Performs a 10 second test and if noise is detected a warning is displayed.
- b) Automatically extends a test to improve the accuracy.

Special Features

- Uses only two wires to loop test
- Guaranteed not to trip RCDs while loop testing
- Will not take out 6 A MCBs
- Clear easy to read display
- 3-phase safe
- 50 V-480 V operation
- PFC display
- Stable test results
- USB downloading on LTW335

High current loop testing

For supplies that are not RCD protected the high current test can be used, as there is no risk of tripping and RCD.

Auto start

An auto-start function will start the loop test running as soon as the test leads are connected, means much faster testing.

Three-phase safe

The instruments will operate on a wide range of electrical voltages.

High resolution test

The LTW425 offers a high current high resolution loop test to three decimal places (0.001 Ω).

PFC Display

All instruments can calculate up to 20 kA and the LTW425 can calculate up to 40 kA using the 0.001 high current, resolution test range.



The popular LTW325 comes complete, ready for work

High current loop impedance tester LT300

Special Features

- High current loop testing
- Wide range of frequencies
- Wide range of supply voltages
- CATIV 300 V



LT300 the simplest of loop testers

If it's an unprotected circuit, high current testing is quick.

The LT300 offers high current loop testing over a wide range of frequencies and supply voltages with simple, fast, two wire operation.

Frequency range

Supply frequency is indicated upon connection and the LT300 will automatically set to the supply frequency either 16 Hz, 33 Hz, 50/60 Hz, 125 Hz or 400 Hz. Testing will commence automatically.

Loop Impedance measurement

Two loop impedance ranges are provided.

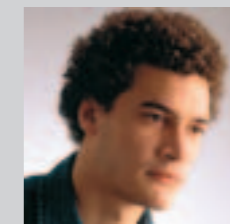
20 Ω - Resolution to 0.01 Ω

200 Ω - Resolution to 0.1 Ω

Supply voltage:

Operational supply range extends from 50 V to 550 V (400 V @ 16 Hz), with a warning for voltages over 330 V highlighting accidental phase to phase connections on a nominal 230 V system.

Know How



After all those years of wishing you had 3 hands the Megger LTW series now offers a 2 wire non-tripping loop test. It's great, you know exactly what you are testing, P-E, P-N or P-P, because you do the connections. When the connections are made the test automatically starts.

There is no need to press the test button unless you want to restart the test.

And the results are so repeatable. It saves loads of precious time.

Loop testers

		LTW315	LTW325	LTW335	LTW425	LT300
Loop testing	2-wire non-tripping loop testing	■	■	■	■	■
	2-wire high current, fast, loop testing		■	■	■	■
	110 V to 280 V applications		■	■	■	■
	50 V to 440 V applications		■	■	■	■
	50 V to 550 V applications			■	■	■
	Phase to phase testing		■	■	■	■
	PFC range 20 kA	■	■	■	■	■
	PFC range 40 kA				■	■
	Resolution 0.01 ohm	■	■	■	■	■
	Resolution 0.001 ohm				■	■
	Automatic noise detection	■	■	■	■	■
	Automatic test start	■	■	■	■	■
	Frequency measurement	■	■	■	■	■
	16 Hz to 400 Hz operation				■	■
Max Zs display				■	■	
Max R1 + R2 display				■	■	
Features	Back lit display	■	■	■	■	■
	Built-in fold away cover	■	■	■	■	■
	Quick start guide in cover	■	■	■	■	■
	Test result storage				■	■
	Downloading of test results				■	■
Included accessories	Accepts rechargeable batteries	■	■	■	■	■
	Storage and carry case	■	■	■	■	■
	2-wire lead set complete with crock clips	■	■	■	■	Optional
	Mains socket lead set	■	■	■	■	Optional
	Free calibration certificate	■	■	■	■	■
Standards	IEC61010-1 CATIV 300 V	■	■	■	■	■
	EN61557	■	■	■	■	■
	Weather- and dust-proof to IP54	■	■	■	■	■

RCD tester RCDT300 series



RCDT320 can automatically cycle through tests and record results, which saves a lot of your time



Megger RCDT testers come complete with calibration certificate in a tough carry case

Special Features

- Thick rubber armoured case
- Clear colour coded selectors
- Large, easy to read display
- Super grip test-leads with lock on croc clips
- Tough
- Easy to use
- Safe
- Weatherproof to IP54
- Hands free RCD testing
- USB downloading on RCDT330

The New Megger RCD testers provide the full solution to RCD testing.

The RCDT tests all types of RCDs; standard, d.c. and selective, performing 1/1, 1I and 5I tests on RCDs rated at 30 mA, 100 mA, 300 mA and 500 mA tested at 0° or 180°.

The RCDT320 offers additional tests for RCDs rated at 10 mA and 1000 mA.

Touch voltage is measured at the start of a test, and will automatically test inhibit if the touch voltage exceeds the preset level.

Touch voltage inhibit is selectable from 25 V to 50 V.

Save your valuable time

RCDT320 offers additional time saving features.

Remote testing – RCDT320 will automatically cycle through the 1/1, 1I and 5I tests at 0° or 180° recording the results, so you can stay with and reset the RCD. This means the job gets done faster, it is more likely to be complete, and it saves your legs and time.

Ramp testing to measure the trip current of an RCD – the test current is slowly increased from 1/1 to 1I+10%, the trip current is held on the display, making it quicker and easier to diagnose nuisance tripping.

RCDs on 110 V centre tapped site supplies can be tested by the Megger RCDT320 due to its wide operating voltage range of 50 V to 280 V.

Your safety is Megger's number one concern

These new RCD testers have built in safety features to look after you and the tester –

- Safety interlock to prevent unsafe connection of the test leads
- Test inhibit, if the supply voltage exceeds 280 V
- 3 phase safe – even when connected across phases, both you and the tester will remain safe
- LED connection indicators correct and test lead connection, making sure it is right first time

The Megger RCD testers are so easy to use and quick to learn

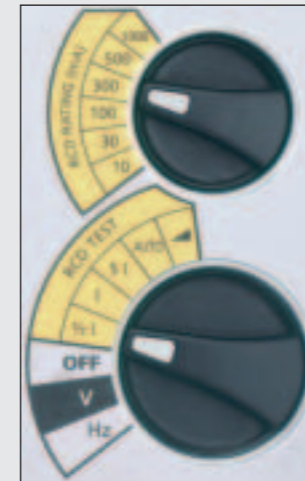
- There are no buried functions, so they are easy to use
- The colour coding helps test selection, speeding up testing time and helping you locate faults fast
- The quick start guide in the lid keeps all the basic information at hand when you need it

Megger RCD testers will take the bashing that testers receive when they are on site

They are rubber armoured and have an integral solid lid to cover the display.

The lid has a heavy-duty hinge that locks away underneath when in use, making it easy to use and impossible to lose.

And you don't need to pull out the test leads to shut the lid.



Clear range selector for poor light conditions



Shutter mechanism makes it easy to use the right leads



Heavy duty hinge locks away underneath



Clear LED polarity indicators help you get the right wiring and test lead connection

Know How



Use the 'ramp test' to identify nuisance tripping RCDs.

An overly current sensitive or faulty RCD can cause nuisance tripping of the RCD, which can be very difficult to locate. A current clamp meter is not fast enough. By testing with a ramp test, the test current is slowly increased until the RCD trips.

The tester displays the trip current in milliamps (not the trip time). If this is too low, replace the RCD.

RCD testers				
		RCDT310	RCDT320	RCDT330
RCD testing	1/1, 1I, 5I RCD trip time test	■	■	■
	Selective breakers	■	■	■
	DC breakers (1/1, 1I, 5I)	■	■	■
	Programmable RCD	■	■	■
	30, 100, 300, 500 mA RCDs	■	■	■
	10, 1000 mA RCDs	■	■	■
	RCD trip current test (RAMP)	■	■	■
	Auto RCD test	■	■	■
	0°/180° polarity selection	■	■	■
	Touch voltage selectable	■	■	■
Features	Max touch voltage (25 V/50 V)	■	■	■
	Operating range 100 to 280 V	■	■	■
	Operating range 50 to 280 V	■	■	■
	3 Phase safe	■	■	■
	Large clear display	■	■	■
	Backlight	■	■	■
	Battery status indication	■	■	■
	Auto power down	■	■	■
	Fuse blown indication	■	■	■
	Data storage	■	■	■
Accessories included	Download via USB port	■	■	■
	IP54 weatherproof	■	■	■
	IEC61010-1 CATIII 300 V	■	■	■
	EN61557	■	■	■
	Plug ended test lead	■	■	■
	2 wire test lead probe/croc clip ended	■	■	■
	3 year warranty	■	■	■
	Free calibration certificate	■	■	■

Three products in one easy case.
All genuine Megger instruments, all you need
for rapid testing.

Electrical test kits MTK



All you need for rapid testing

Megger MTK300 electrical test kits cover the entire 17th Edition test requirements of electrical contractors performing electrical inspection and testing for single and three phase applications. The kits consist of three instruments, an MIT insulation tester, an LTW earth loop tester and an RCDT residual current device tester, each with batteries fitted, in a smart case, with a full set of test leads and calibration certificates. Three kits are available: MTK310, MTK320 and MTK330.

Electrical Test Kits				
		MTK310	MTK320	MTK330
Insulation testing (see pages 10 and 11 for technical data)	MIT310	■		
	MIT320		■	
	MIT330			■
Loop testing (see pages 12 and 13 for technical data)	LTW315	■		
	LTW325		■	
	LTW335			■
RCD testing (see pages 14 and 15 for technical data)	RCDT310	■		
	RCDT320		■	
	RCDT330			■
Rubber armoured		■	■	■
Weatherproof to IP54		■	■	■
Test leads included		■	■	■
Calibration certificates included		■	■	■
3 year warranty		■	■	■
Batteries included		■	■	■
Smart brief case		■	■	■

Downloading multifunction tester CM500

- Non trip loop impedance test
- Variable RCD test current
- Equivalent fault impedance for RCD trip
- RCD ramp test
- Megger DART display
- Auto sequence RCD test



CM500 has integral RS232 port for easy data downloading

Downloading multifunction tester			CM500
Insulation testing ranges	1000V insulation		■
	500V insulation		■
	250V insulation		■
Continuity test features	200mA continuity		■
	Lead resistance zeroing		■
	Buzzer		■
	Loop testing		■
Loop testing	Loop test max range in Ω		3000
	High current loop		■
	P-N loop test		■
	P-E loop test		■
	3 Phase P-P loop test		■
	Low current 15mA non-trip		■
	Earth metal work testing		■
	PSCC indicator		■
	Earth electrode resistance		■
	RCD testing	1/1, I and 5I	
Selectable RCD current test			■
Programmable RCD current			■
RCD ramp test			■
Auto run of all 5 RCD tests			■
Supply testing	Tests DC sensitive RCDs		■
	0° + 180° phase angle		■
	Auto test start facility		■
	Reverse		■
Display	Voltage measurement		■
	Frequency measurement		■
	Phase rotation display		■
Intelligent safety system	Auto shut down		■
	Large easy to read LCD display		■
	Megger analogue arc		■
Voltage range	Backlight		■
	Test lockout		■
	Safe contact detector		■
Current measurement	Default voltmeter		■
	Standard		■
Data handling	Switched probe facility		■
	Frequency		■
Includes	Result storage, recall and direct printout		■
	Data logging and download to PC		■
Voltage range	Live circuit warning		■
	Auto discharge		■
	Weather and dust proof to IP54		■
Current measurement	3 year warranty		■

If you must test a meter,
do it right.

Meter test box MTB7671



Works with all makes of testers actively measuring the output of the testers and confirming they are within the limits prescribed as well as checking the readings.

- Tests the full range of a tester's capability
- Does not trip RCD protected circuits
- Tests to the regulations BS7671, BS EN61557 and IEE On-Site Guide
- Checks insulation, continuity, loop, PFC and RCD functions
- Confirms testers continued performance
- Colour coded test functions

Certification bodies like the NICEIC, ELECSA, NAPIT, CORGI and others now request evidence of your tester's accuracy and consistency.

The MTB7671 makes that an easy job.

Know How



Testing your testers on a regular basis is great. You can spot a problem before it happens, making sure your meter is ready for use when you want it. But it is so important that you check what the tester is putting out. If the test voltage or current is low it doesn't stress the system you're testing properly and you're not testing to the Wiring Regulations.

	BS7671, BS EN61557 and IEE On-Site Guide tester requirements	MTB7671 parameters tested
Continuity short circuit test current	>200 mA	>200 mA Pass / fail indication
Continuity test voltage range	4 V – 24 V	4 V – 24 V Pass / fail indication
Continuity resistance		0.5 Ω 5.0 Ω
Insulation test current	1 mA	1 mA Pass / fail indication
Insulation test voltages	250 V +25% max 500 V +25% max 1 kV +25% max	250 V +25% max 500 V +25% max 1k V +25% max Pass / fail Indication
Insulation test resistances	0.25 MΩ min 0.5 MΩ min 1 MΩ min	0.25 MΩ 0.5 MΩ 1 MΩ 9 MΩ 90 MΩ
Loop		Local mains impedance
Loop + 1 Ω		Loop + 1 Ω
Loop + 180 Ω (IEE On-Site Guide 10.3.5 Earth Electrode Resistance)	200 Ω max	Loop + 180 Ω
RCD currents (I)		10 mA, 30 mA and 100 mA
RCD no trip (1/1)	No trip	>1999 mS
RCD (I)	<200 mS	40 mS @ 0° 50 mS @180°
RCD (5 x I)	<40 mS	10 mS @ 0° 20 mS @ 180°

MFT
Part P kits
Combined loop and RCD tester
Insulation testers
Industrial insulation testers
Loop testers
RCD testers
Electrical test kits
Downloading MFT
Meter test box
MFT with certification
Certification software
PATs
Multimeters
Voltage detector, Socket tester
Clamp-meters
Accessories
Earth testers
Test leads
Prices
Other Megger products
About Megger

Multifunction tester with on-site certification MFT1553

- The new MFT1553 On-Site tester with certification software
- Test with the best tester on the market
 - Send the results to your smart-phone, laptop or PDA using Bluetooth®
 - Complete the certificate as you go, there and then on-site
 - Print the certificate
 - Post the invoice
- Making the money-go-round move that bit faster for you



Software supplied with the MFT1553 On-site allows you to run certificates on your smart-phone

The MFT1553 multifunction tester with Bluetooth communications

- Works with your PDA or smart-phone to let you complete certificate on-site as you go
- Easy download protocols
- Wireless communications so no leads to lose or tangle

The MFT1553 is the latest version of the class-leading Megger multifunction testers. Since they were launched they have changed the way the trade works. MFT has all the testing you need in one tough, easy to use, good value machine. Electricians all over the country have opted to change to the all-in-one solution for their testing.

The new MFT1553 now allows you to transfer the test readings from the tester to a storage device wirelessly. When you have PowerSuite On-site on your mobile device, like a smart-phone or a PDA, you can complete certificates as you go, there, on-site.

When you get back from a job the last thing you want is to have to settle down and transfer your readings from your notes.

Well now you don't have to, your full day's work is stored as a completed certificate on your mobile device, smart-phone, PDA or laptop. All you have to do is print it sign it and make out the invoice.

Another step in fulfilling Megger's mission to make your life better

Special Features

Downloading

- Using Bluetooth communications

RCD testing

- Automatic RCD testing
- 10m A to 1000 mA RCD ranges
- Tests
 - Standard RCDs (AC)
 - Delayed / selective RCDs (S)
 - d.c. sensitive RCDs (A)
- 0° / 180° testing
- Ramp test to diagnose nuisance tripping
- Fault or touch voltage display
- Selectable fault or touch voltage inhibit

Test lead panel with interlocking shutter

- Prevents dangerous lead combination

Earth loop testing

- Non-tripping 0.01 Ω low current loop testing
 - with PFC
- High current loop testing for quick results
 - with PFC
- Supply voltage and polarity indication
- P-P, P-N and P-E loop testing

Insulation testing

- Insulation test at
 - 250 V for SELV and PELV applications
 - 500 V for most applications
 - 1000 V for others
- Voltage warning alarm
- Safety lockout
- Automatic discharge

Continuity testing

- Automatic continuity testing
- Fast response buzzer
- 200 mA continuity from 0.01 Ω to 99.9 Ω
- Pass / fail threshold in 6 steps from 2 Ω to 200 Ω
- Test lead null stored even when the tester is switched off

Voltage testing

- Voltmeter 0 V to 500 V a.c. / d.c.
- Default voltmeter on all ranges

Products available

Multifunction tester with Bluetooth downloading to mobile devices plus PowerSuite Pro Lite 16th Edition certification

for technical data see page 5

Order code

MFT1553 On-Site

PowerSuite On-site. Complete your certificates on site

- Can be used with many different platforms including smart mobile phones, PDAs and laptops
- Use your mobile device to store the information in a certificate format
- Automatic population of certificate test results
- Colour coded form fields
- Simple wizard driven functionality
- Additional manual override or overwrite
- Contact or client manager

Yes. You really can complete your certificates on your smart mobile phone.

You key in the results of your visual inspection, clicking or ticking the appropriate box. Your tester downloads the test results and populates the form automatically.

All that is needed when you get home is to transfer the certificate to your laptop or desktop for printing and storing. And how much time does that save you?

You told us that you hated coming home and having to do hours of paper work before you can invoice your clients.

Well now you don't.

All registered PowerSuite customers will be updated with the 17th Edition certificates as they become available from the various providers.



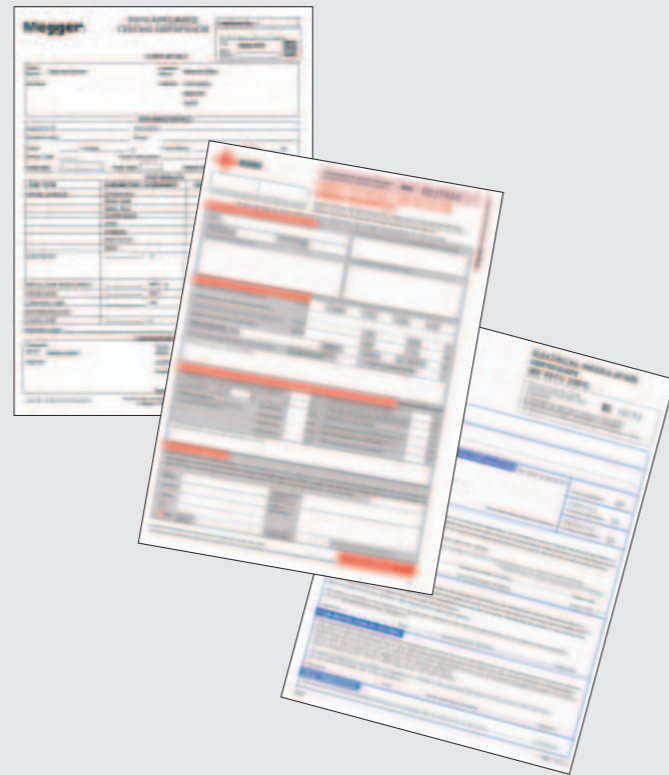
Certificate screens are colour coded to match the testers

The Bluetooth word mark and logo are owned by the Bluetooth SIG, Inc. and any use of such marks by Megger is under license.

Test certification software PowerSuite® Pro-Lite and PowerSuite® Professional



Easy to use software



Both Pro-Lite PAT and Pro-Lite 17th have wizard controls for generating certificates.



Take PowerSuite on-site with our new Ultra-mobile package

PowerSuite Pro-Lite

Test certificate software

Provides the ideal introduction to computer based form filling, with the ability to enter test results directly on the certificate or by uploading test data from Megger instruments. The certificate can then be printed or filed for future reference.

Wizards

Both PowerSuite Pro-Lite PAT and PowerSuite Pro-Lite 17th feature Wizard controls for fast and easy control of clients, certificates and downloading from instruments. One click and the software takes you through each procedure quickly and painlessly.

PowerSuite Pro-Lite PAT and PowerSuite Pro-Lite 17th are available for either Portable Appliance Testing or Electrical Certification. PowerSuite Pro-Lite 17th is ideal for the certification of installations to the Part P regulations.

PowerSuite is a registered trademark of Megger Limited.

PowerSuite Professional database packages

PowerSuite Contractor 17th

Several managers make life simple for creating editing and filing test results.

Download Manager – for Megger instrument download support. A wide range of drivers is available for Megger 17th Edition electrical test instrumentation.

Certificate Manager – Supplied initially with extensive 16th Edition certificates, including ECA, IEE, NICEIC and BS Electrical test certificates and ELECSA certificate downloads, or PAT testing forms. All registered PowerSuite customers will be updated with the 17th Edition certificates as they become available.

Contacts Manager – Simple graphical view of all your clients, locations and contact details. Can be expanded and collapsed as required.

Database Manager – Client and results database manager links all your customers with their test results, by simple drag and drop editing.

PowerSuite Contractor PAT

For dedicated PAT testing. As PowerSuite Contractor 17th but all 16th and 17th Edition certificates are replaced by a range of PAT testing reports. Only Megger PAT4 drivers are supplied for downloading instruments.

PowerSuite Contractor full

Combines all the features of both PowerSuite Contractor 17th and PowerSuite Contractor PAT in one fully integrated package. All portable appliances and electrical test results are managed by client and location and can easily be relocated. The package also includes a project billing module, that provides a simple job costing and invoicing facility. All registered PowerSuite customers will be updated with the 17th Edition certificates as they become available from the various providers.

PowerSuite Industrial

Additional features provide greater flexibility and control. Digital Photography module allows the addition of digital photographs in your documentation. The Viewer CD allows anyone to keep, view and print an electronic copy of certificates or reports without the need to install PowerSuite. 3rd party instrument download drivers are included for other manufacturers' Portable Appliance Testers and electrical installation testers, allowing importation of test results from non-Megger instruments.

PowerSuite Power

Two features enhance PowerSuite further:

- Document designer module – for creating your own customised certificates and reports for printing on plain paper. Edit an existing document or create a new one from scratch. Documents can be personalised and fonts changed.
- Maintenance module – An essential tool for managing the multitude of equipment that is not covered by periodic electrical testing. Such items include ladders, fire extinguishers, saws, etc.

PowerSuite SME

Store all your customer records on your server. Multiple access to the same records can be prevented to ensure data integrity. Good network procedures ensure automatic backup of records without the duplication problems on local PCs. Multiple user licences are a cost effective solution for large database users.

PowerSuite Ultra-mobile

Leave your PC at home! Now you can take PowerSuite on-site with our new Ultra-mobile package. By installing PowerSuite Ultra-mobile on your mobile device, smart-phone PDA or laptop, you can complete all your electrical testing on site, either bluetoothing or keying-in your results. It means that the client sees the work entailed in making out the certificate and when you leave the site all you need to do is download the certificates and make out the invoice.

	PowerSuite									
	PowerSuite Pro-Lite PAT	PowerSuite Pro-Lite 17th	PowerSuite On-site	PowerSuite Contractor PAT	PowerSuite Contractor 17th	PowerSuite Contractor full	PowerSuite Industrial	PowerSuite Power	PowerSuite SME	PowerSuite Ultra-mobile
PAT testing	■			■						
Electrical testing		■	■	■	■	■	■	■	■	
Client manager	■	■	■	■	■	■	■	■	■	
Download manager	■	■	■	■	■	■	■	■	■	
Certificate manager	■	■	■	■	■	■	■	■	■	
Wizard/Menu functions	■	■	■	■	■	■	■	■	■	
Company logo import	■	■	■	■	■	■	■	■	■	
Database manager				■	■	■	■	■	■	
Organiser module				■	■	■	■	■	■	
Reports module				■	■	■	■	■	■	
Billing module						■				
Extended certificates							■	■	■	
Extended reports							■	■	■	
Digital Image import							■	■	■	
Viewer CD							■	■	■	
3rd party instrument drivers							■	■	■	
Document design module							■	■	■	
Maintenance module								■	■	
Networkable – multiple user access									■	
PDA installation			■							■
Supports Palm OS® 3.0 and above			■							■
Supports Windows Mobile®			■							■
Import/Export to PowerSuite Pro packages			■							■
E-mail certificates			■							■

Portable Appliance Tester

PAT4 series and PAT32



PAT4 DV/3 is tough, powerful and quick

PAT4 DV/3 and PAT4 DVF/3

Fast to learn and quick to use, the PAT4/3 tests Class I, Class II and IT equipment and tests 110 V and 230 V appliances.

It fully meets the relevant regulations

- EN61010-1 safety standard
- New IEE code of practice

The PAT4/3 saves you time by being fast to boot up and restart, and simple to understand and use. The PAT4/3 works with the users in the way they want to work.

Boots up in seconds

- A sixth of the time of some PATs, time that could be used for carrying out tests

Restarts where you left off

- Because you move around the site to test appliances, the PAT4/3 returns to the step at which you switched off

Clock always ready for work

- No need to enter the time and date as the clock stays set for 10 years

Automatic traceability

- All test times and dates stamped

Plain English test codes

- No complicated codes to define the test routines, durations and pass bands

Single entry of appliance details

- Fast direct data entry to memory using the QWERTY keyboard

Built-in fuse check

- One less instrument to carry

Powerful search routines

- Help you find your clients' appliances for testing quickly

Auto or Manual mode

- You can make the Pass or Fail decisions or set the limits for each type of equipment and let PAT4/3 make the decision

Degradation warning

- Because PAT4/3 can hold the previous test result, deterioration is highlighted

On-site printing

- For instant certification



Print asset labels on-site, at low cost

PAT4/3 Printer

- Print bar code labels on site
- Reduced re-test times
- Small size printer fits in PAT4 case
- Rechargeable battery and mains adaptor included

The PAT4/3 bar code printer offers the PAT engineer the convenience of adding an asset ID bar code label to the asset under test, in the field, without the need for carrying rolls of pre-printed bar code labels.

Label information includes the pass date, retest date and the testing company name from the PAT4. Alternatively, a fail can be printed under the bar code.

Bar code scanner

Plugs directly in to the PAT4/3 to speed data input.



PAT32

Dual voltage, analogue / digital portable appliance tester

- PAT32 tests 110 V and 230 V, Class I and Class II equipment
- Fuse check and circuit continuity test
- Earth bond test at 10 A and 25 A
- Analogue / digital display with pass band
- Optional extension lead adaptor



Profitable PAT testing with the fast working PAT4/3



PAT32 is low cost but flexible

Portable Appliance Testing systems				
		PAT32	PAT4 DV/3	PAT4 DVF/3
Functions	Fuse check	■	■	■
	Circuit test	■	■	■
	Insulation	■	■	■
	120 V appliances	■	■	■
	230 V appliances	■	■	■
	Extension lead test adaptor	option	■	■
	Earth continuity	■	■	■
	10 A Earth bond	■	■	■
	25 A Earth bond	■	■	■
	Operation test	■	■	■
	Lead test	■	■	■
	Flash test	■	■	■
	Earth leakage	■	■	■
Test sockets	B51362/B54343 (UK)	■	■	■
Features	Automatic operation	■	■	■
	Client/Location/Results database	■	■	■
	RS232 download	■	■	■
	Printer port	■	■	■
	Full keyboard	■	■	■
	Digital display	■	■	■
	Backlight	■	■	■
	Bar code reader	■	option	option
	Results printer	■	option	option

Multimeters AVO300 series

Tough and powerful

- Simple and tough
 - Auto-ranging function, keeps complexity to a minimum
 - Separate fuse and battery compartment, allows both to be replaced without breaking the calibration seals
 - Rubber-armoured case has an integral stand which folds out completely for hanging the instrument
- Integrated probe retention clips for handheld testing and probe storage
 - Large uncluttered display is easy to read at distance. AVO310 has a backlight
 - Powered by a standard 9 V battery. Auto power-off and battery warning indicator
 - AVO300 instruments meet the stringent safety requirements of CATIII 600 V



Powerful range of tough multimeters

Multimeters M7000 and M8000 series



M7000 and M8000 series

High specification multimeters

- Dual parameter readouts
- 40 000 and 4 000 count displays for accuracy and responsiveness
- Up to 0.08% accuracy
- Dual 4% digit and bar graph display

M7027

- Professional multimeter with 0.3% accuracy and 3% - 4% digit dual display
- Auto range and data hold
- Complies with IEC1010 CATIII 600 V and CATII 1000 V

M7029

- Professional multimeter with 0.2% accuracy and 3% - 4% digit dual display
- Complies with IEC1010 CATIII 600 V and CATII 1000 V

M8035

- Professional multimeter with 0.08% accuracy and 3% - 4% digit dual display
- Complies with IEC1010 CATIII 1000 V

M8037

- True RMS professional multimeter
- 0.08% accuracy with backlit 3% - 4% digit dual display
- Complies with IEC1010 CATIII 1000 V

Volt finder and flashlight VF series AC voltage detector

VF1 and VF2 Volt finder and flashlight

Low power consumption – many hours of flashlight illumination from one set of alkaline batteries.

identifying live conductors, finding a break in a wire, verifying a blown fuse while in circuit, and detecting the presence of a.c. voltage at:

- Socket outlets
- Switches
- Circuit breakers
- Fuses
- Wires and cables
- Luminaires

Socket tester MST210

- Simple and effective identification of faulty wiring at sockets
- Easy to use

VF1 and VF2 AC voltage detector and torch

- Non-contact detection of a.c. voltage
- Automatic audible warning buzzer (VF2 only)
- Bright red voltage indicator in tip
- Built-in bright white LED torch
- CATIII 1000 V



VF2 Voltage finder has a helpful audible warning



Socket tester

- 2 green and 1 red LED for instant error reporting and fault diagnosis
- Identifies 17 missing wire and wrong connection combinations
- Tough and reliable

		Multimeters					
		AV0300	AV0310	M7027	M7029	M8035	M8037
Voltage ranges	V a.c.	600	600	750	750	750	750
	V d.c.	600	600	1000	1000	1000	1000
	V a.c. and d.c.						■
Accuracy		1%	1%	0.3%	0.2%	0.08%	0.08%
ac conversion type	Average responding	■	■	■	■	■	■
	TRMS						■
Current ranges	A a.c.	10	10	10	10	10	10
	A d.c.	10	10	10	10	10	10
Resistance	Ω	20 M	20 M	40 M	40 M	40 M	40 M
Continuity	Audible buzzer	■	■	■	■	■	■
	Diode	■	■	■	■	■	■
Conductance	in nS			400	400	400	400
Capacitance	in mF			40	40	40	40
Frequency	in Hz			250 k	250 k	4 M	4 M
Duty cycle							■
Display	Single parameter	■	■				
	Dual parameter			■	■	■	■
	Number of digits	3½	3½	4 and 3½	4 and 3½	4 and 3½	4 and 3½
	Bar graph						■
	Backlit		■				■
Operation	Auto ranging	■	■	■	■	■	■
	Data hold	■	■	■	■	■	■
	Max/Min record		■	■	■	■	■
	Relative function			■	■	■	■
Protection	Rubber boot	■	■	■	■	■	■
Warranty		3 years	3 years	3 years	3 years	3 years	3 years

Clampmeters DCM and MMC range



DCM300E – a high resolution a.c. current clamp

MMC850 can measure multi-core cables



Fork multimeter

DCM330

- 200 A a.c. Open-Jaw current measurement
- 0.1 V to 1000 V auto-ranging a.c. and d.c. voltage measurement
- 0.1 Ω to 20.00 MΩ Resistance range
- Continuity buzzer and diode check
- Non-contact detection of a.c. voltage
- CATIV 600 V

The Megger DCM330 is suitable for use anywhere where there is a requirement to measure ac current in single unshielded conductors less than 16mm diameter a.c./d.c. voltages up to 1000 V, or resistances up to 20 MΩ.

Earth leakage clampmeter

DCM300E

- Versatile high resolution a.c. current clamp, ideal for checking nuisance-tripping RCDs.
- 4 ranges 30 mA range (0.01 mA resolution), 300 mA, 30 A and 300 A
- 3½ digit LCD with analogue bar graph
- Data hold

Multi-core clampmeter

MMC850

Use the MMC850 anywhere where you want to measure current without breaking a circuit or splitting cables. The MMC850 can also be used in place of traditional clamp meters, when commissioning, or for general maintenance work in electrical machinery and installations.

400 A a.c. clamp meter

DCM310

- Easy to read
- Manual operation
- Low cost
- Tough

This easy to use clampmeter is ideal to rapidly check the current flowing with the minimum of fuss.

400 A a.c. 600 V a.c. / d.c. 20 MΩ clampmeter

DCM320

- 20 MΩ resistance range
- continuity buzzer
- Auto-ranging
- Auto off to conserve batteries

The DCM320 is a low cost current clamp and multimeter. It is supplied blister packed complete with test leads, batteries and carry case.

600 A a.c. and d.c., 600 V a.c. / d.c. clampmeter

DCM340

- d.c. current range
- Frequency counter
- Analogue bar graph
- Back light
- Large jaws
- Auto off to conserve batteries

The DCM330 is an a.c. and d.c. current clamp and multimeter that offers exceptional value. It is supplied blister packed complete with test leads, batteries, user guide and carry case.



DCM310



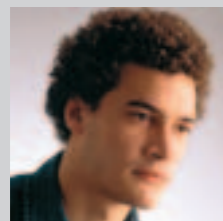
DCM320



DCM340

		Megger Clampmeters					
		DCM310	DCM320	DCM330	DCM340	DCM300E	MMC850
Current ranges	A a.c.	20 A, 200 A, 400 A	40 A, 200 A, 400 A	200 A	60 A, 400 A, 600 A	30 mA, 300 mA, 30 A, 300 A	100 A multicore, 200 A single core
	A d.c.						
Voltage measurement	V a.c.		200 V, 600 V	200 V, 1000 V	400 V, 600 V		
	V d.c.		200 V, 600 V	200 V, 1000 V	400 V, 600 V		
Resistance	Ω		200, 2 k, 200 k, 2 M, 20 M	200, 2 k, 200 k, 2 M, 20 M	400		
Continuity	Audible buzzer		■	■	■	■	■
Auto-ranging			■	■	■	■	■
Display							
Backlit							
Cable cores	Single core	■	■	■	■	■	■
	Multicore						
Data hold		■			■	■	■
Max hold					■		
Max conductor size		27 mm	27 mm	27 mm	35 mm	40 mm	13 mm
Safety rating		CATIII 600 V	CATIII 600 V	CATIV 600 V	CATIII 600 V	CATIII 300 V	CATIII 600 V

Know How



This clamp is fantastic. I can put it around a washing machine mains cord and read off the motor and heater currents to see if they work without opening the machine or removing the plug. Its amazing I never knew you could get a clamp this clever and so easy to use. I reckon I can get an extra call in a day, and calls are money.

Extension test lead and coil

- 30 metre and 50 metre versions
- Suitable for direct R2 measurements
- Easy re-wind of cable with tangle-free cable guide
- Compact and light design

Compact extension test lead for direct R2 measurements so eliminating the need for crossover connections and R1 + R2 measurements. The furthest point in the circuit can be easily verified, and every earth point on the circuit checked for integrity prior to energising.

Product may vary from one shown.



Extension test lead and coil	
50 m extension lead, green, with 2.4 mm safety plug	ETL50
30 m extension lead, green, with 2.4 mm safety plug	ETL30



Test certificate books

With a full range of pre-printed Megger test certificates you can project a professional look on to your hand written certificates.

There are eight different certificates. Each one is duplicated so that you have a copy of the certificates you issue for reference. All certificates will be revised for the 17th Edition in March 2008.

Certificate	Certificate requirements	Order no
Electrical installation	Must include MTC350 or MTC360	MTC310
Electrical installation minor works		MTC320
Periodic inspection report	Must include MTC380 and MTC350 or MTC360	MTC330
Survey schedule and test report		MTC340
Inspection and test schedule (domestic) or distribution boards up to 12 ways	Must accompany MTC310 or MTC330	MTC350
Inspection and test schedule for distribution boards up to 3 x 12 ways	Must accompany MTC310 or MTC330	MTC360
Part P domestic electrical installation		MTC370
Observation record sheet	Must accompany MTC330	MTC380

- Instructional DVD on Testing and Inspecting new domestic installations
- Includes earth spike resistance measurement techniques for TT systems
- Ideal study aid for anyone enrolling on the C&G 2391 (or equivalent) course
- Excellent refresher on 'Best Practice' for experienced electricians
- Includes a 17th Edition update card



Products available	
Initial inspection of a domestic property DVD	DVD100

Digital earth testers DET3 and DET10/20

DET3 series Digital earth testers

All models include these features

- Extra large selector switch
- Extra large, clear display for easier operation in outdoor conditions
- Simple one button operation
- Battery powered with a bar graph that updates battery strength
- Noise reduction up to 40 V peak to peak
- Safety rating of CATIV 100 V
- IP54 rated (water/dust ingress) for extra protection in harsh conditions

DET3TD

Three pole earth testing kit

- 2 and 3 point testing
- Selectable 25 V or 50 V output

DET3TD offers a complete kit for customers wishing to conduct earth electrode testing using the 2 and 3 pole techniques

DET3TA

Analogue three pole earth testing kit

- Clear easy to read analogue display
- 2 and 3 point testing
- Selectable 25 V or 50 V output

The DET3TA is a three pole earth testing solution for those users who prefer an analogue instrument.

DET3TC

ART or selective three pole earth testing kit

- 2 and 3 point testing
- Selectable 25 V or 50 V output

When used with the optional ICLAMP, allows fall of potential testing without the need to disconnect the electrode under test.



DET3TC

Each instrument includes everything you need to test:

- Comes complete with test leads, stakes, batteries, calibration certificate and rugged polypropylene carry case.

DET10C and DET20C Earth resistance clamp testers

Earth resistance clamp testers are suitable for measuring earth resistance of installations such as buildings, pylons and RF transmitter sites and for inspection of lightning protection systems.

- Measures ground rod resistance
- Measures ground leakage current
- Automatically self calibrates
- Auto ranging
- High and low alarms
- Memory and downloading



DET20C

Earth Testers					
	DET3TD	DET3TA	DET3TC	DET10C	DET20C
Stakeless testing				■	■
2-wire resistance	■	■	■		
3-wire resistance	■	■	■		
ART (Attached Rod Technique) resistance measurement			■		
Resistance range	0.01 to 2000 Ω 2% ± 3d	0.01 to 2000 Ω 2.5% ± 3d of scale length	0.01 to 2000 Ω 2% ± 3d	0.025 to 1500 Ω	0.025 to 1500 Ω
Earth Voltage range	0 to 100 V	0 to 100 V	0 to 100 V		
Earth Current range (with optional current measuring clamp)			0.5 mA to 19.9 A	0.2 mA to 35 A	0.2 mA to 35 A
Display	Digital	Analogue	Digital	Digital	Digital

Test Leads						
Series Used on	Description	Test End	Instrument End	Part No.	Price £	
MFT1501, MFT1502, Page 5	3 wire test lead set	3 x 4 mm safety + 3 prods + 3 clips	4mm right angled	6220-796	33.00	Supplied
MFT1552 and MFT1553	UK mains test lead set	13 A plug (BS1363)	Special 3 pin plug	6220-740	22.00	
	Illuminated switched probe (MFT1502, MFT1552 and MFT1553 only)	Switched probe with prod and torch	Special 3 pin plug	6311-089	69.00	Optional
	Switched test probe SP1	Switched probe with prod	Special 3 pin plug	6220-606	34.00	
	Replacement tip set for switched probes			6121-562	15.00	
	Fused 2 wire lead set	10 A fused 2 x prods + 2 clips	4mm right angled	6220-827	38.00	
	Euro mains test lead set	Schuko Mains Plug / CEE 7/7 plug	Special 3 pin plug	6231-593	22.00	
LRCD210 and LRDC220 Page 7	3 wire test lead set	3 x 4 mm safety + 3 prods + 3 clips	Special 3 pin plug	6220-782	28.00	Supplied
	UK mains test lead set	13 A plug (BS1363)	Special 3 pin plug	6220-740	22.00	
	Fused 2 wire lead set	10 A fused 2 x prods + 2 clips	4mm right angled	6220-827	38.00	Optional
	2 wire test lead set	2 x prods + 2 clips red and green	4mm right angled	6220-784	22.00	
	Euro mains test lead set	Schuko Mains Plug / CEE 7/7 plug	Special 3 pin plug	6220-741	22.00	
MIT300, MIT310, Page 9	2 wire test lead set	2 x 4 mm safety prods + clips	4mm right angled	6220-779	22.00	Supplied
MIT320 and MIT330	Switched test probe SP3 (MIT320 and MIT330 only)	Switched probe with prod	Special 3 pin plug	6220-781	32.00	Optional
	Fused test leads set	500mA fused 2 x 4 mm prods + clips	4mm right angled	6220-789	38.00	
	Illuminated switched probe	Switched probe with prod and torch	Special 3 pin plug	6311-089	69.00	
MIT220 and MIT230 Page 10	2 wire test lead set	2 x 4 mm safety prods + clips	4 mm right angled	6220-779	22.00	Supplied
	Fused test lead set	500 mA fused 2 x 4 mm prods + clips	4 mm right angled	6220-789	38.00	Optional
MIT400, MIT410, Page 11	2 wire CATIV 600 V silicon test lead set	2 x 4 mm safety prods + clips	4 mm right angled	6220-813	28.00	Supplied
MIT420, MIT430, MIT40X MIT480, MIT481 and MIT485	Switched CATIV 600 V probe (not MIT400 or MIT480)	Switched probe with prod	Special 2 pin plug	6220-812	32.00	Optional
	Fused test lead set	500 mA fused 2 x 4 mm prods + clips	4 mm right angled	6220-789	38.00	
LTW315, LTW325, Page 13	2 wire test lead set	2 x prods + 2 clips red and green	4 mm right angled	6220-784	22.00	Supplied
LTW335 and LTW425	UK mains test lead set	13 A plug (BS1363)	4 mm safety shroud	6220-810	22.00	Optional
	Euro mains test lead set	Schuko Mains Plug / CEE 7/7 plug	4 mm safety shroud	6220-832	22.00	
	Fused test lead set	10 A fused 2 x prods + 2 clips	4 mm right angled	6220-827	38.00	
LT300-EN-OO Page 13	2 wire test lead set	2 x prods + 2 clips red and green	4 mm right angled	6220-784	22.00	Supplied
	Fused 2 wire lead set	10 A fused 2 x prods + 2 clips	4 mm right angled	6220-827	38.00	
LT300-EN-BS Page 13	UK mains test lead set	13 A plug (BS1363)	4 mm safety shroud	6220-810	22.00	Optional
	Fused 2 wire lead set	10 A fused 2 x prods + 2 clips	4 mm right angled	6220-827	38.00	
RCDT300, RCDT320 and RCDT330 Page 15	2 wire test lead set	2 x prods + 2 clips red and green	4 mm right angled	6220-784	22.00	Optional
	UK mains test lead set	13 A plug (BS1363)	Special 3 pin plug	6220-740	22.00	
	Euro mains test lead set	Schuko Mains Plug / CEE 7/7 plug	Special 3 pin plug	6220-741	22.00	
	Fused 2 wire lead set	10 A fused 2 x prods + 2 clips	4 mm right angled	6220-827	38.00	
CM500 Page 16	2 wire test lead set	2 x 4 mm safety + 2 prods + 2 clips	Special 5 pin plug	6231-631	33.00	Supplied
	UK mains test lead set	13 A plug (BS1363)	Special 5 pin plug	6231-633	25.00	Optional
	2 wire test lead set with 5 m long lead	2 x 4 mm safety + 2 clips	Special 5 pin plug	6231-637	64.00	
	3 wire test lead set	3 x 4 mm safety + 2 prods + 3 clips	Special 5 pin plug	6231-632	51.00	
	Fused prod and clip set (use with 6231-631 and 6231-632)	2 x fused prods (10 A) + 3 clips		6180-405	41.00	
	Earth bond test lead set	13 A plug + 4mm safety + prod	Special 5 pin plug	6231-634	42.00	
	Euro mains test lead set	Schuko Mains Plug / CEE 7/7 plug	Special 5 pin plug	6231-635	25.00	
	Switched test probe SP2	2 wire lead with switch	Special 5 pin plug	6231-636	57.00	
	ET kit, 3 pole earth test kit	3 x 4 mm safety + clips + 3 x spikes	4 mm safety shroud	6210-160	122.00	
PAT32 Page 23	Earth bond lead	Clip	Dedicated connection	6231-043	16.00	Supplied
	EP1 earth bond probe	Probe	Dedicated connection	6320-225	50.00	Optional
	Safebloc adapter lead		Dedicated connection	6331-230	84.00	
	Extension lead adapter	230 V plug (BS1363)		6111-130	133.00	
PAT4/3DV and PAT4/3DVF Page 23	Earth bond lead	Clip	Dedicated connection	6231-043	16.00	Supplied
	Flash test lead (PAT4/3DVF only)	Probe	Dedicated connection	5310-401	25.00	
	EP1 earth bond probe	Probe	Dedicated connection	6320-225	50.00	Optional
	Safebloc adapter lead		Dedicated connection	6331-230	84.00	
	Extension lead adapter	110 V plug	Dedicated connection	6220-639	16.00	
	Extension lead adapter	230 V plug (BS1363)	Dedicated connection	6220-632	16.00	
M7027, M7029, Page 25	Standard test lead set	2 x 4mm safety prods + clips	4 mm safety	6220-562	28.00	Supplied
M8035 and M8037	FPK8 600 V fused test lead set	2 x fused prods (500 mA) + clips	4 mm safety shroud	6111-218	46.00	Optional
AVO300 and AVO310 Page 25	Test lead set	2 x prods	4 mm right angled			Supplied
	Replacement test lead set	2 x 4mm safety prods + clips	4 mm right angled	6220-779	22.00	Optional
	Fused test lead set	500 mA fused 2 x 4 mm prods + clips	4 mm right angled	6220-789	38.00	
DET3TA, DET3TC and DET3TD Page 29	3 wire test lead set - 3 m, 5 m, 10 m	3 m wire croc clip 5 m and 10 m straight connectors		6220-805	12.00	Supplied
	2 earth spikes	30 mm earth spike	4 mm socket	6220-804	6.00	
	4 right angled adaptors	4 mm banana socket and binding post	4 mm right angled	6220-803	22.00	Optional

Test Leads						
Series Used on	Description	Test End	Instrument End	Part No.	Price £	
BM100/4	FPK8 600 V fused lead set	2 x fused prods + clips (500 mA)	4 mm retractable shroud	6111-287	43.00	
BM120	Replacement lead set	2 x 4 mm safety prods + clips	4 mm safety	6220-779	22.00	
	FPK8 600 V fused lead set	2 x fused prods + clips (500 mA)	4 mm safety shroud	6111-218	46.00	
BM220	Replacement lead set	2 x 4 mm safety prods + clips	4 mm safety	6220-779	22.00	
	FPK8 600 V fused lead set	2 x fused prods + clips (500 mA)	4 mm safety shroud	6111-218	46.00	
BM223HD	Replacement lead set	2 x 4 mm safety prods + clips	4 mm straight	6220-779	22.00	
	FPK8 600 V fused lead set	2 x 4 mm safety + 2 prods + 3 clips	4 mm straight	6111-218	46.00	
	Standard test leads	2 x 4 mm safety prods + clips	4 mm right angled	6220-779	22.00	
	Fused test leads	2 x 4 mm safety prods + clips	4 mm right angled	6220-789	38.00	
BM400	Replacement lead set	2 x 4 mm safety prods + clips	4 mm safety	6220-779	22.00	
	FPK8 600 V fused lead set	2 x fused prods + clips (500 mA)	4 mm safety shroud	6111-218	46.00	
	Switched test probe SP1	1 x prod with switch	Special 3 pin plug	6220-606	34.00	
BM80	Replacement lead set	2 x 4 mm safety prods + clips	4 mm safety	6220-437	29.00	
	Switched test probe SP1	1 x prod with switch	Special 3 pin plug	6220-606	34.00	
BMM	Replacement lead set	2 x 4 mm safety prods + clips	4 mm safety	6220-779	22.00	
	FPK8 600 V fused lead set	2 x fused prods + clips (500 mA)	4 mm safety shroud	6111-218	46.00	
	Switched test probe SP1	1 x prod with switch	Special 3 pin plug	6220-606	34.00	
CM300/2	2 wire test set	2 x 4 mm safety + 2 prods + 2 clips	Special 5 pin plug	6231-631	33.00	
	3 wire test set	3 x 4 mm safety + 2 prods + 3 clips	Special 5 pin plug	6231-632	51.00	
	2 wire test set with 5 m long lead	2 x 4 mm safety + 2 clips	Special 5 pin plug	6231-637	64.00	
	Fused prod and clip set	2 x fused prods (10A) + 3 clips for use with lead set		6180-405	41.00	
	UK mains test lead	13 A plug Special	5 pin plug	6231-633	25.00	
	UK 2 wire earth bond lead	13 A plug + 4 mm safety + prod	Special 5 pin plug	6231-634	42.00	
	Euro mains test lead	Schuko Mains Plug / CEE 7/7 plug	Special 5 pin plug	6231-635	25.00	
	ET kit, 3 pole earth test kit	3 x 4 mm safety + clips + 3 x spikes	4 mm safety shroud	6210-160	122.00	
CM400/2	2 wire test set	2 x 4 mm safety + 2 prods + 2 clips	Special 5 pin plug	6231-631	33.00	
	3 wire test set	3 x 4 mm safety + 2 prods + 3 clips	Special 5 pin plug	6231-632	51.00	
	2 wire test set with 5 m long lead	2 x 4 mm safety + 2 clips Special	5 pin plug	6231-637	64.00	
	Fused prod and clip set	2 x fused prods (10 A) + 3 clips for use with lead set		6180-405	41.00	
	UK mains test lead	13 A plug Special	5 pin plug	6231-633	25.00	
	UK 2 wire earth bond lead	13 A plug + 4 mm safety + prod	Special 5 pin plug	6231-634	42.00	
	Euro mains test lead Schuko	Mains Plug / CEE 7/7 plug	Special 5 pin plug	6231-635	25.00	
	Switched test probe SP2	1 x prod with switch	Special 5 pin plug	6231-636	57.00	
	ET kit, 3 pole earth test kit	3 x 4 mm safety + clips + 3 x spikes	4 mm safety shroud	6210-160	122.00	
DETs	ET kit, 4 pole field earth test kit	4 x 4 mm safety + clips + 4 x spikes	4 mm retractable shroud	6310-755	221.00	
	ET kit, 3 pole earth test kit	3 x 4 mm safety + clips + 3 x spikes	4 mm retractable shroud	6210-160	122.00	
	ET kit, 4 pole earth test kit	4 x 4 mm safety + clips + 4 x spikes	4 mm retractable shroud	6210-161	166.00	
LCB	2 wire test set	2 x 4 mm safety + 2 prods + 2 clips	Special 5 pin plug	6231-631	33.00	
	3 wire test set	3 x 4 mm safety + 2 prods + 3 clips	Special 5 pin plug	6231-632	51.00	
	2 wire test set with 5 m long lead	2 x 4 mm safety + 2 clips	Special 5 pin plug	6231-637	64.00	
	Fused prod and clip set	2 x fused prods (10 A) + 3 clips for use with lead set		6180-405	41.00	
	UK mains test lead	13 A plug	Special 5 pin plug	6231-633	25.00	
	UK 2 wire earth bond lead	13 A plug + 4 mm safety + prod	Special 5 pin plug	6231-634	42.00	
	Euro mains test lead	Schuko Mains Plug / CEE 7/7 plug	Special 5 pin plug	6231-635	25.00	
	Switched test probe SP2	Switch probe + 1 prod	Special 5 pin plug	6231-636	57.00	
LT7	2 wire test set	2 x 4 mm safety + 2 prods + 2 clips	Special 3 pin plug	6231-591	30.50	
	Fused prod and clip set	2 x fused prods (10 A) + 3 clips for use with lead set		6180-405	41.00	
	UK mains test lead	13 A plug	Special 3 pin plug	6231-601	21.50	
	UK 2 wire earth bond lead	13 A plug + 4 mm safety + prod	Special pin plug	6231-634	42.00	
	Euro mains test lead	CEE 7/7 plug	Special 3 pin plug	6231-593	22.00	
LT310, LT320 and LT330	3 wire test lead set	3 x 4 mm safety + 2 prods + 3 clips	Special 3 pin plug	6220-782	28.00	
	UK mains test lead set	13 A plug (BS1363)	Special 3 pin plug	6220-740	22.00	
	2 wire test lead set	2 x prods + 2 clips red and green	4mm right angled	6220-784	22.00	
	Euro mains test lead set	Schuko Mains Plug / CEE 7/7 plug	Special 3 pin plug	6220-741	22.00	
	Earth bond test lead set	13 A plug (BS1363) and flying lead	Special 3 pin plug	6231-586	38.00	
M5000	Replacement lead set	2 x 4 mm safety prods + clips	4 mm safety	6220-562	28.00	
	FPK8 600 V fused lead set	2 x fused prods (500 mA) + clips	4 mm safety shroud	6111-218	46.00	

Test leads are available from our web shop at www.megger.com/uk/shop

Test leads are available from our web shop at www.megger.com/uk/shop

Price List				
			Price £	
	Page 4	MFT1501/2	Multifunction tester	779.00
		MFT1502/2	Multifunction tester with illuminated range switches and probe	879.00
		MFT1552	Multifunction tester with auto RCD testing	975.00
		MFT1553	Multifunction tester with auto RCD testing and Bluetooth	995.00
	Test leads included	6311-089	Illuminating switched probe with 3 probe lengths (MFT1502 and MFT1552 only)	
	6220-796	3-wire lead set with prods and croc clips		
	6220-740	UK mains test lead		
	Page 6	PPK210	Electrical test kit comprising MIT310 and LRCD210	749.00
		PPK220	Electrical test kit comprising MIT320 and LRCD220	875.00
	Test leads included	6220-782	3-wire lead set with prods and croc clips	
		6220-779	2-wire lead set with prods and croc clips	
	6220-740	UK mains test lead		
	Page 7	LRCD210	Combined non-trip loop and RCD tester	445.00
		LRCD220	Combined non-trip and high current loop and 1000mA RCD tester	499.00
	Test leads included	6220-782	3-wire lead set with prods and croc clips	
	6220-740	UK mains test lead		
	Page 8	MIT300	Insulation and continuity tester 250 V and 500 V	265.00
		MIT310	Insulation and continuity tester as MIT300 with 1000 V test and 600 V voltmeter	349.00
		MIT310A	Insulation and continuity tester with analogue display	299.00
		MIT320	Insulation and continuity tester as MIT310 with switched test probe	375.00
		MIT330	Insulation and continuity tester as MIT320 with data storage and downloading	409.00
	Test leads included	6220-779	2 wire lead set red and black with prods and croc clips	
		6220-781	Switched probe with prod (MIT320 and MIT330 only)	
	Page 10	MIT220	Light-weight insulation and continuity tester 250 V and 500 V with buzzer	249.00
		MIT230	Light-weight insulation and continuity tester 250 V, 500 V and 1000 V with buzzer	279.00
	Test leads included	6220-779	2 wire lead set with prods and croc clips	
	Page 11	MIT400	CATIV 600 V industrial insulation and continuity tester 250 V, 500 V and 1000 V	289.00
		MIT410	CATIV 600 V insulation tester as MIT400 with 50 V 100 V PI and DAR	335.00
		MIT420	CATIV 600 V insulation tester as MIT410 with results storage and recall	379.00
		MIT430	CATIV 600 V insulation tester as MIT420 with Bluetooth® downloading	435.00
		MIT40X	CATIV 600 V insulation tester with test voltage selectable from 10 V to 100 V	369.00
		MIT480	Telecoms insulation and continuity tester 50 V and 100 V	359.00
		MIT481	Telecoms insulation tester as MIT480 with 250 V, 500 V and 1000 V results storage and recall	499.00
		MIT485	Telecoms insulation tester as MIT481 with Bluetooth® downloading	555.00
	Test leads included	6220-813	2 wire CATIV 600V lead set with prods and croc clips	
		6220-812	Remote switched CATIV 600V probe (not MIT400 or MIT480)	
		Page 12	LTW315	Non-trip 2-wire loop tester 100 V to 280 V
		LTW325	Non-trip 2-wire loop tester 50 V to 480 V with frequency measurement	479.00
		LTW335	Non-trip 2-wire loop tester as LTW320 with data storage and downloading	525.00
		LTW425	High resolution non-trip 2-wire loop tester 50 V to 480 V	515.00
Test leads included		6220-810	UK mains test lead	
	6220-784	2 wire lead set red and green with prods and croc clips		
	Page 13	LT300-EN-00	CATIV 300 V high current industrial loop tester with red and green lead set	305.00
	Test leads included	6220-784	2 wire lead set red and green with prods and croc clips	
		LT300-EN-BS	CATIV 300 V high current industrial loop tester with mains test lead	305.00
	6220-810	UK mains test lead		
	LT300-EN-FS	CATIV high current loop tester with fuse lead set	319.00	
Test leads included	6220-827	10 A fuse lead set		
	Page 14	RCDT310	RCD tester 100 V to 280 V	299.00
		RCDT320	RCD tester as RCDT310 with auto RCD test	339.00
		RCDT330	RCD tester as RCDT320 with data storage and downloading	369.00
	Test leads included	6220-740	UK mains test lead	
	6220-784	2 wire lead set red and green with prods and croc clips (RCDT320 and RCDT330 only)		
	Page 16	MTK310	Test kit comprising MIT310, LTW315 and RCDT310	1,095.00
		MTK320	Test kit comprising MIT320, LTW325 and RCDT320	1,195.00
		MTK330	Test kit comprising MIT330, LTW335 and RCDT330	1,315.00
	Test leads included	6220-779	2 wire lead set red and black with prods and croc clips	
		6220-781	Switched probe with prod (MTK320 and MTK330 only)	
	6220-784	2 wire lead set red and green with prods and croc clips (MTK320 and MTK330 only)		
	6220-740	UK mains test lead		
	Page 17	CM500	Multifunction tester with data storage and downloading	1,109.00
	Test leads included	6231-633	UK mains test lead	
		6231-631	2 wire lead set red and black with prods and croc clips	

Price List				
			Price £	
	Page 17	MTB7671	Meter test box	370.00
	Page 18	MFT1553 On-site	Multifunction tester with Bluetooth download to PowerSuiteOn-site software	1195.00
	Test leads included	6311-089	Illuminating switched probe with 3 probe lengths	
		6220-796	3-wire lead set with prods and croc clips	
		6231-601	UK mains test lead"	
	Page 20	PowerSuite Pro-Lite PAT	Basic testing software for portable appliance testing	209.00
		PowerSuite Pro-Lite 17th	Basic testing software for electrical testing	209.00
		PowerSuite On-Site	Pro-Lite 17th and mobile device package	289.00
		PowerSuite Pro Contractor PAT	Database PAT testing software with download and forms	425.00
		PowerSuite Pro Contractor 17th	Database 17th Edition testing software with download and forms	425.00
		PowerSuite Pro Contractor Full	Combined PAT and 17th Edition testing software with billing module	529.00
		PowerSuite Pro Industrial	As Contractor Full with third party drivers	635.00
		PowerSuite Pro Power	As Industrial with document design and maintenance	739.00
		PowerSuite Pro SME	Powersuite networking including single user licence	955.00
		PowerSuite Ultramobile	Form filler software for mobile devices (needs PS Lite or Full PS package)	209.00
	Page 22	PAT32	Dual voltage portable appliance tester	659.00
	Test leads included	6231-043	Earth bond test lead with croc clip	
	Page 23	PAT4 DV3	High speed dual voltage portable appliance tester	929.00
		PAT4/3 DVF	High speed dual voltage portable appliance tester with flash tester	1,135.00
	Test leads included	6231-043	Earth bond test lead with croc clip	
		5310-401	Flash test lead (PAT4/3DVF only)	
	Page 24	Bar code scanner	Speeds up data acquisition	353.00
		PAT4/3 printer	Bar code printer with charger	343.00
		Bar code labels	1200 labels in a pack of 4 rolls	33.00
	Page 24	AVO300	Digital multimeter CATIII 600 V	66.00
		AVO310	Digital multimeter as AVO300 with backlight	77.00
	Test leads included		2 wire lead set with prods and croc clips	
	Page 25	M7027	Dual display digital multimeter 0.3% accuracy	141.00
		M7029	Dual display digital multimeter 0.2% accuracy	158.00
		M8035	Dual display digital multimeter 0.08% accuracy	201.00
		M8037	Dual display digital multimeter 0.3% accuracy TRMS d.c. and a.c.	261.00
	Test leads included	6220-562	2 x 4 mm test leads with prods and croc clips	
	Page 26	VF1	a.c. Voltage detector	15.00
		VF2	a.c. Voltage detector with buzzer	16.50
		MST210	BS1363 socket tester	14.99
		DCM310	400 A a.c. clampmeter	69.00
		DCM320	400 A a.c. 600V a.c./d.c. 20 mΩ clampmeter	85.00
	Page 26	DCM330	Fork multimeter	89.00
		DCM340	600 A a.c./d.c. 600 V a.c. clamp multimeter	119.00
	Test leads included (not DCM310)		2 wire lead set with prods	
		DCM300E	High resolution earth leakage clampmeter	365.00
	MMC850	Multi-core clampmeter	165.00	
	Page 28	ETL30	30 m extension test lead and spool	57.00
		ETL50	50 m extension test lead and spool	67.00
		MTC310	Electrical installation certificate pad	14.00
		MTC320	Electrical installation minor works certificate pad	14.00
		MTC330	Periodic inspection report certificate pad	14.00
		MTC340	Survey schedule and test report certificate pad	14.00
		MTC350	Inspection and test schedule (domestic) certificate pad for distribution boards up to 12 ways	14.00
		MTC360	Inspection and test schedule certificate pad for distribution boards up to 3 x 12 ways	14.00
		MTC370	Part P domestic electrical installation certificate pad	14.00
		MTC380	Observation record sheet certificate pad	14.00
	DVD100	Initial inspection and test of a domestic property DVD	30.00	
	Page 29	DET3TD	Digital earth tester with bond testing capabilities	411.00
		DET3TA	Analogue display digital earth tester	402.00
		DET3TC	3 and 2 wire earth tester enabled for attached rod technique	448.00
	Test leads included	ICLAMP	Clamp for use with DET3TC for attached rod technique	201.00
		6220-804	2 earth spikes	
	6220-805	3 wire lead set 10 m, 5 m and 3 m with croc clip		
	Page 30	DET10C	Earth resistance clamp meter with data logging	731.00
		DET20C	Earth resistance clamp meter with data logging and download	798.00



MIT510 5 kV insulation resistance tester

- Tests insulation resistance up to 15 TΩ, the MIT510 is an easy to operate and very tough. It can do automatic IR. The built-in timer and high test ranges allow simple and quick evaluation of the condition of the insulation under test.



TTR25 Hand-held single and three-phase Transformer Tester

- Measures turns ratio, excitation current and polarity of windings in single- and three-phase distribution and power transformers (tested phase by phase), potential and current transformers, and tapped transformers. User can operate the test set one handed. Eliminates the need to bend down to operate the instrument and speeds up testing time. It is rugged, with a high impact, shock resistant case, yet very light at 870g.



TDR1000 and TDR2000 Cable fault locator / Time domain reflectometer

- Hand held, compact cable fault locator for locating faults on metallic cables. Minimum resolution of 0.1 m and a 3 km maximum range depending on velocity factor selected and cable type. 20 km version also available. Four output impedance are available (25 Ω, 50 Ω, 75 Ω and 100 Ω), and a velocity factor between 0.30 and 0.99 will meet any cable test requirements.



PA9+ Power quality analyser

- On-site power quality analysis and data retrieval without a computer. Intelligent download and real time graphical trending of Harmonics, THD and TDD. It now has a faster Digital Signal Processor (DSP), 12 MB of internal, non-volatile memory, and incorporated auxiliary power input capabilities. Includes Metrosoft® software and remote communications.



DLRO10x and DLRO200 and DLRO600 Digital low resistance ohmmeter

- Tests for earths and bonding in telecommunications towers, rail, aircraft, anything bimetal, switchgear (including lv switchgear), breakers, etc. Automatically detects continuity in potential and current connections. Gives accurate results in under three seconds, with auto current reversal. Fuse protected to 600 V. NiMH battery reduces weight. Fully automatic. select the most suitable test current, up to 10 A dc to measure resistance from 0.1 μΩ to 2000 Ω on one of seven ranges.



Programma Torkel 840 battery load unit

- Batteries are becoming an increasingly important part of modern life with their use in standby power and maintained supply units. Megger has added to its BITE range of battery impedance testers with the Programma Torkel range of battery load units which allow the batteries to be tested in service, by adjusting to include the load current in the test parameters.



LCR131 Component tester

- Quick, easy testing and analysis of discrete components. Dual display of numerical L/C/R value and dissipation / quality factors. The unit accurately measures the value of inductances, capacitances and resistances at frequencies of 120 Hz and 1 kHz.



MPRT protective relay test set

- The MPRT tester and AVTS® software from Megger raises the standard for the automatic testing and management of protective relay systems. The MPRT offers traditional manual and semi automatic testing of the relay system whilst the AVTS package offers fully automatic testing as well as relay maintenance schedule management.

Made in UK

All the 16th and 17th edition products in this catalogue are engineered and made at our factory in Dover. If you've ever caught a ferry to France, you've probably seen our building – there's a big Megger logo on our car park, next to the roundabout as you enter the port. Everyone hears about the decline in British manufacturing, but Megger employs hundreds of people at this site. As a professional electrician, you have a right to demand the very best electrical test equipment. By specifying Megger, not only will you get the best, but you'll also be supporting a great British success story.

Engineered for electrical contractors

Many of our engineers sit on UK and international technical committees, and we have regular meetings with all the big trade associations in England and Scotland. We also have close contacts with training organisations, scheme providers for self-certification schemes for installers, and government organisations. If anyone knows how important it is to understand the needs of electrical contractors in the UK, it's Megger. So when new legislation or rules are introduced – whether it's Part P of the Building Regulations, RoHS, the WEEE Directive or BS 7671, you can count on Megger to put your interests first.

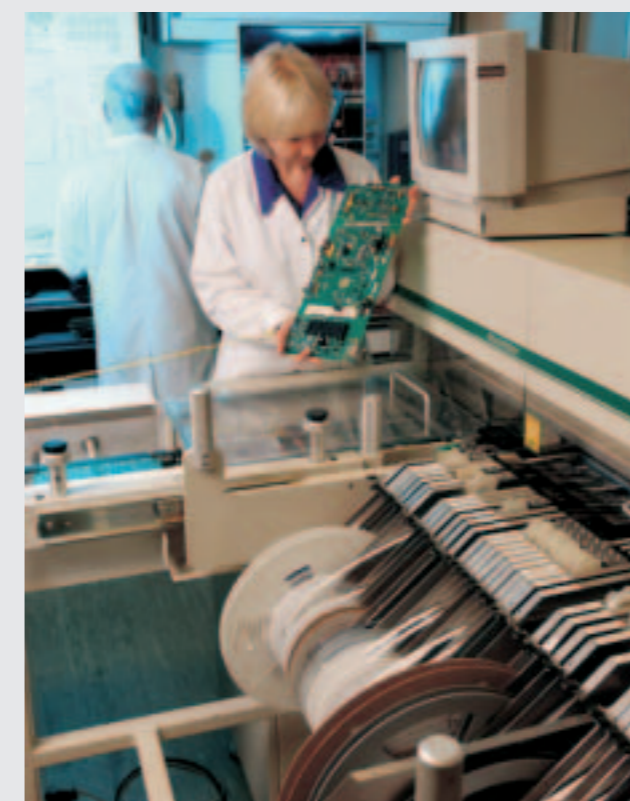
Established originally in the late 1800s, the company has been manufacturing test and measurement instruments designed to perform preventive maintenance and troubleshooting for decades. Megger products help customers all over the world improve their efficiency, reduce costs, and meet standards. It operates globally with dedicated field sales teams and distributors located all over the world and manufacturing plants in the United States and Sweden as well as the United Kingdom.



The commitment of Megger to industry is reflected in its technical leadership and in being the first to design and introduce many key products.

Certified to ISO 9001:2000 and ISO14001

Megger's manufacturing plant in Dover is certified to the full operational requirements of ISO 9001:2000 and the manufacturing process strictly adheres to the highest standards for quality, reliability and safety. It is also certified to ISO14001, the standard for environmental management systems.



Calibration and repair service

Megger operates fully traceable calibration and repair facilities ensuring your instrument continues to provide the high standard of performance and workmanship you expect from Megger. These facilities are complemented by a worldwide network of approved repair and calibration companies, to offer excellent in-service care for your Megger products. For information on having your instrument calibrated or repaired and to obtain a Returns Authorisation number please call +44 (0)1304 502101.

MFT1553 On-site multifunction tester with Bluetooth® and certification software

The MFT1553 On-site allows you to transfer the test readings to a storage device like a smart-phone, a PDA or a laptop wirelessly, so you can complete certificates as you go, there on-site. The most popular all in one tester now includes Bluetooth communication to make certification less long winded.



MFT1553 On-site now you can complete the certificate on-site in view of your client.

MTB Meter test box

MTB7671 works with all makes of testers actively measuring the output of the testers and confirming they are within the limits prescribed as well as checking the readings. It can be used on protected circuits without tripping the system RCD.



MTB7671 helps you check your testers are working right.

DCM Clampmeters

DCM300 series of clampmeters offers a range of good value clamp meters or clamp multimeters. DCM330 is rated at CATIV 600 V and has an open jaw configuration, the DCM310 is a pure clamp meter while the DCM320 and DCM340 offer multimeter functionality. The DCM340 has the benefit of large jaws.



Clampmeters are great for fault finding.

PowerSuite Test Certification Software

Simple to use test certification software. Now with 9 different packages to choose, PowerSuite has answers for single users and network users, and you can even run PowerSuite on a PDA or even a smart-phone. PowerSuite can help you manage your electrical testing, reporting, certificates, client details and documentation.



Profitable PAT and electrical testing software.



Megger

WWW.MEGGER.COM