

# CATU KATALOG OSOBNÍCH OCHRANNÝCH PROSTŘEDKŮ PRO NN, SN, VN

TEL: 257 322 538, 251 562 544, 251 564 680

FAX: 251 560 202

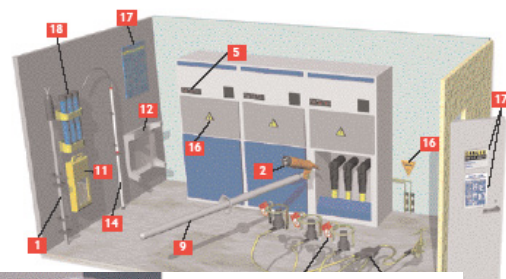
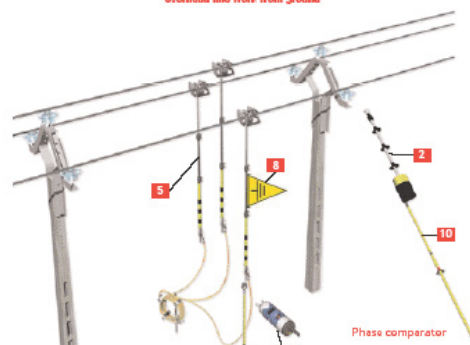
E-MAIL: SALES@ENCENTRUM.CZ

WWW.ENCENTRUM.CZ

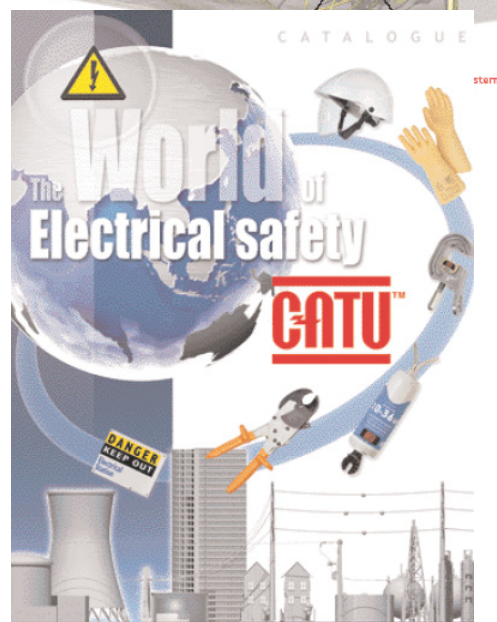
## Zastoupení společností:

- MEGGER Ltd. UK
- CATU, Francie
- SPIRENT- EDGCUMBE Ltd. UK
- ELTEL INDUSTRIES, Indie
- ETL PRUEFTECHNIK, Německo
- KURTH ELECTRONIC, Německo
- NDB TECHNOLOGIES Inc., Kanada
- HIGH VOLTAGE Inc., USA
- OFIL Ltd, Izrael
- PALMER WAHL, USA
- RYCOM INSTRUMENTS Inc., USA
- TREK Inc., USA

Overhead line work from ground



LIVE WORKING TOOLS



Head and eyes protection

Insulating rubber gloves

Insulating mats and boots

## Safety glasses

Protection against UV radiation and ejections of solid particles. Grilamid frame in orange Softflex. Anti-scratch, anti-impact and anti-chemical product treatments. Caution: Do not use for welding operations.

**EN 166/EN 170**  
**CE**



- MO-11000** Clear lenses, delivered in pouch
- MO-11001** Tinted lenses, delivered in pouch

## Overglasses

Polycarbonate overglasses. Protection against UV radiation and ejections of solid particles. Caution: Do not use for welding operations.

**EN 166/EN 170**  
**CE**



- MO-11010** Clear lenses
- MO-11011** Green tinted lenses

## ABS helmet

Electrically insulating helmets for use on voltage installations. Safety industrial helmet, safety helmet for electrical use, especially designed to maximize wearer's comfort. Standard sizes 53 to 63. Leather trim 21 cm along the inside for added comfort. Multiple adjustments for a perfect fit - headband: adjustable in 3 mm increments. Built-in cushion for optimum ventilation. Safety chin strap: fastenings to shell tear resistant. Weight: 0.300 kg.

**EN 397**  
**EN 50365**   
**ANSI Z89.1:2003**  
**Class E 20 kV**  
**CE**



- MO-182/1-B** White
- MO-182/1-R** Red

## Face shield

Polycarbonate face shield adjustable on the head by milled wheel. Protection against electric arcs of short-circuits. Anti-condensation treatment. Caution: Do not use for welding operations.

**EN 166/EN 170**  
**CE**



- MO-186** Single size, adjustable
- M-881635** Spare face shield for MO-186
- M-87384** Bag for face shield and helmet

## Face shield

Face shield adjustable on MO -182 helmet. 100% UV protection. Weight: 0.170 kg. Caution: Do not use for welding operations.

**EN 166/EN 170**  
**CE**



- MO-184** Single size, adjustable by rubber band

## Helmet with built-in face shield

Panoramic face shield in non-scratch and anti-mist polycarbonate. Chinstrap (with Velcro fastening) Head fit adjustment by milled wheel. Single size: 0.270 kg.

**EN 166/EN 170/EN 397**  
**EN 50365**   
**CE**



- MO-185-BL** White
- MO-185-R** Red
- MO-185-J** Yellow
- MO-185-B** Blue
- M-881622** Spare face shield for MO-185

## Polycarbonate helmet

Polycarbonate helmet. Shock and wear resisting, comfortable. Adjustable size from 53 to 63 cm. Weight: 0,465 Kg.

**EN 397**  
**CE**



- MO-183-BL** White, single size, adjustable
- MO-183-RL** Red, single size, adjustable

Head and eyes protection

Insulating rubber gloves

Insulating mats and boots

## Headlamp with adjustable focus

Can be carried either on the head or any type of helmet.  
Lighting control and beam by switches.  
Range: 30 meters.  
Adjustable lamp height angle.  
Sealed against rain.  
Powered by 4 batteries LR 6.  
Autonomy: 6 hours.  
Standard bulb 4.8 V/0.3 A.

CE



MS-118 Headlamp - Weight: 0.187 kg

M-95-865 Halogen bulb (sold by set of 5 units)  
5.2 V 0.5 A

M-95-864 Hooks set for helmet

## LED's Headlamp (3 LED's)

Can be carried either on the head or any kind of helmet.  
- Lighting by 3 high performance LEDs.  
- 3 lighting levels.  
- Adjustable lamp height angle.  
- Very light, waterproof IP65.  
- Range: 10 to 15 meters.  
- Powered by 3 batteries LR03 (AAA).  
- Autonomy: 80 hours.

CE



MS-121 Delivered with batteries and a carrying bag  
Weight: 0.09 Kg

M-95-864 Hooks set for helmet

## LED's headlamp (5 LED's)

LED's Headlamp (5 LED's).  
Can be carried on the head or any kind of helmet.  
Lighting by 5 high performance white new generation LED's - 3 lighting levels + 1 flash mode + 1 red lighting.  
IPX6.  
Powered by four batteries LR06 (AA).  
Range : 30 meters.  
Autonomy : 100 hours.

CE



MS-127 Delivered with batteries and a carrying bag  
Weight: 226 g

M-95-864 Hooks set for helmet

## Intrinsically safe ATEX LED's Headlamp

II 2GD EEx ia IIC T4  
Can be carried either on the head or any kind of helmet.  
- Lighting by 3 high performance White LEDs.  
- 2 lighting levels (High: 3 LEDs on or low: 1 LED on).  
- Adjustable lamp height angle.  
- Very light, ABS body.  
- ATEX certified Categorie 2 (Zone 1)  
N° TRL03ATEX21005X.  
- Range: 10 to 15 meters.  
- Powered by 3 batteries LR03 (AAA).  
- Autonomy: 150 hours.  
- Strap: cloth or silicone rubber (for helmet).

CE



MS-126 Delivered with batteries - Weight: 0,125Kg

M-95-864 Hooks set for helmet

Head and eyes protection

Insulating rubber gloves

Insulating mats and boots

### Insulating rubber gloves

Insulating rubber gloves conform to international IEC-60903 standard. To satisfy the requirements of this standard, they are subjected to dielectrical, mechanical resistance and ageing tests. The acceptance levels for mechanical tests are stricter. The tests are especially aimed at checking the tensile strength and elongation at break, the mechanical puncture test and tension set. Our gloves are made of latex especially treated to obtain high dielectric characteristics; they are individually tested and delivered in sealed plastic bags.



IEC-60903  
CE

Reference	Class	Voltage (V)	Thickness (mm)	Designation	Weight (g)
CG-02 (*)	00	500	1.7	orange composite gloves with mechanical properties	270
CG-05 (*)	00	500	0.5	latex	90
CG-10 (*)	0	1000	1.0	latex	200
CG-10 (*)-AM	0	1000	1.0	two color latex rolled edge	210
CG-12 (*)	0	1000	2.3	orange composite gloves with mechanical properties	450

\* References to be completed by size A, B, C, D. Correspondence with standard sizes: A = 8, B = 9, C = 10, D = 11.

### Undergloves

Cotton undergloves To be used with insulating rubber gloves.



CE

CG-80 (\*\*) \*\* H: men / F: women

### Pneumatic glove tester

For compulsory control of gloves before use. Checking is done by inflating and immersing in water.



### Overgloves

Used as outer glove. Silicon grain leather, very flexible. Large protective cuff in chrome tanned hide. Adhesive strap.



EN 388  
CE

CG-98 (\*) Weight: 0.170 kg

\* Add size: A, B, C, D.

### Carrying bag

Made from reinforced waterproof fabric for transport of rubber gloves in vehicles and tool boxes. Rear loop for belt and snaps.



CG-36 60 x 180 x 400 mm - Weight: 0.120 kg

### Rubber gloves storage box with window

To be placed in high voltage stations. Insulating material, shock resistant, yellow colour. Transparent window (enables to check gloves presence). Bottle of talc included. Attachment: 4 holes 3.5 mm dia., centre distances 155 x 345 mm. U.V. protection window.



CG-35/1 60 x 210 x 460 mm - Weight: 0.730 kg

# Low voltage

Head and eyes protection

Insulating rubber gloves

Insulating mats and boots

## Working gloves

All-grain leather, welt sewn, shirred elastic wrist back.



EN 388  
CE

CG-96 (\*)

Weight: 0.115 kg

\* Add size: A, B, C, D.

Correspondence with standard sizes: A = 8, B = 9, C = 10, D = 11

## Insulating boots

Made from elastomer canvas support, very flexible and resistant. Anti-perforation stainless steel sole and shell. Anti-slip sole. Protection against step and touch hazardous potential gradients.



EN 345

MV-135\*

60 x 210 x 460 mm - Weight: 0.730 kg

\* Add sizes: 39-40/41-42-43/44-45-46/47

## Insulating stepladders

A complete range with top quality features:  
Insulation between two steps: 30 000 V  
Lateral risers in polyester/fiberglass  
Aluminium alloy rungs with anti-slip coating.



EN 131

Reference	Nbr. of steps	Foot rest height (m)	Reach height (m)	Weight (kg)
MP-700-4	3	0.68	2.68	5.9
MP-700-1	4	0.91	2.81	6.9
MP-700-2	5	1.14	3.04	8.0
MP-700-3	6	1.37	3.27	9.4
MP-700-5	7	1.60	3.50	11

## Insulating mats

The matting is manufactured of elastomer compounds with slip-resistant surface. High quality dielectrical rubber.

IEC-61111  
EN 61111  
CE



Individual models.

Reference	Thickness (mm)	Class	Voltage (kV)	Dimensions (m)
MP-42/11	3	3	≤ 26.5	1 x 1
MP-42/16	3	3	≤ 26.5	0.6 x 1
MP-42/66	3	3	≤ 26.5	0.6 x 0.6

For placing in front of panels.

Reference	Thickness (mm)	Class	Voltage (kV)	Dimensions (m)
MP-60/03-5	3	3	≤ 26.5	0.6 x 5
MP-60/03-10	3	3	≤ 26.5	0.6 x 10
MP-100/03-5	3	3	≤ 26.5	1 x 5
MP-100/03-10	3	3	≤ 26.5	1 x 10

## Bags for insulating mats

Specially designed for carrying and protecting insulating mats. Equipped with a shoulder strap and a plastic window for instructions and storage identification.



MP-01

For MP-42/16 and MP-42/66 length: 70 cm

MP-02

For MP-42/11 length: 110 cm

## Multi-pockets electrician bag

Specially designed for carrying and protecting insulating mats, face shield and controllers. Equipped with several pockets.



M-87386

65 x 15 x 25 cm

Low voltage

## Safety glasses

Protection against UV radiation and ejections of solid particles. Grilamid frame in orange Softflex. Anti-scratch, anti-impact and anti-chemical product treatments. Caution: Do not use for welding operations.

EN 166/EN 170  
CE



MO-11000



MO-11001

**MO-11000** Clear lenses, delivered in pouch

**MO-11001** Tinted lenses, delivered in pouch

## Overglasses

Polycarbonate overglasses. Protection against UV radiation and ejections of solid particles. Caution: Do not use for welding operations.

EN 166/EN 170  
CE



MO-11010



MO-11011

**MO-11010** Clear lenses

**MO-11011** Green tinted lenses

## ABS helmet

Electrically insulating helmets for use on voltage installations. Safety industrial helmet, safety helmet for electrical use, especially designed to maximize wearer's comfort. Standard sizes 53 to 63. Leather trim 21 cm along the inside for added comfort. Multiple adjustments for a perfect fit - headband: adjustable in 3 mm increments. Built-in cushion for optimum ventilation. Safety chin strap: fastenings to shell tear resistant. Weight: 0.300 kg.

EN 397  
EN 50365  
ANSI Z89.1:2003  
Class E 20 kV  
CE



**MO-182/1-B** White

**MO-182/1-R** Red

## Face shield

Face shield adjustable on MO -182 helmet. 100% UV protection. Weight: 0.170 kg. Caution: Do not use for welding operations.

EN 166/EN 170  
CE



**MO-184** Single size, adjustable by rubber band

## Helmet with built-in face shield

Panoramic face shield in non-scratch and anti-mist polycarbonate. Chinstrap (with Velcro fastening) Head fit adjustment by milled wheel. Single size: 0.270 kg.

EN 166/EN 170/EN 397  
EN 50365  
CE



## Polycarbonate helmet

Polycarbonate helmet. Shock and wear resisting, comfortable. Adjustable size from 53 to 63 cm. Weight: 0,465 Kg.

EN 397  
CE



**MO-183-BL** White, single size, adjustable

**MO-183-RL** Red, single size, adjustable

**MO-185-BL** White

**MO-185-R** Red

**MO-185-J** Yellow

**MO-185-B** Blue

**M-881622** Spare face shield for MO-185

Head and eyes protection

Insulating rubber gloves

Insulating mats and platforms

Arc flash equipment

Equipment for working on pole

## Bag for helmet and face shield

Cloth cover for transport and protection of helmets and face shields  
MO-182, MO-183, MO-184, MO-185-BL, MO-186.



**M-87384**

Black colour

## Headlamp with adjustable focus

Can be carried either on the head or any type of helmet. **CE**  
Lighting control and beam by switches.  
Range: 30 meters.  
Adjustable lamp height angle.  
Sealed against rain.  
Powered by 4 batteries LR 6.  
Autonomy: 6 hours.  
Standard bulb 4.8 V/0.3 A.



**MS-118**

Headlamp - Weight: 0.187 kg

**M-95-865**

Halogen bulb (sold by set of 5 units)  
5.2 V 0.5 A

**M-95-864**

Hooks set for helmet

## LED's Headlamp (3 LED's)

Can be carried either on the head or any kind of helmet. **CE**  
- Lighting by 3 high performance LEDs.  
- 3 lighting levels.  
- Adjustable lamp height angle.  
- Very light, waterproof IP65.  
- Range: 10 to 15 meters.  
- Powered by 3 batteries LR03 (AAA).  
- Autonomy: 80 hours.



**MS-121**

Delivered with batteries and a carrying bag  
Weight: 0.09 Kg

**M-95-864**

Hooks set for helmet

## LED's headlamp (5 LED's)

LED's Headlamp (5 LED's). **CE**  
Can be carried on the head or any kind of helmet.  
Lighting by 5 high performance white new generation LED's - 3 lighting levels + 1 flash mode + 1 red lighting.  
IPX6.  
Powered by four batteries LR06 (AA).  
Range : 30 meters.  
Autonomy : 100 hours.



**MS-127**

Delivered with batteries and a carrying bag  
Weight: 226 g

**M-95-864**

Hooks set for helmet

## Intrinsically safe ATEX LED's Headlamp

**Ex** II 2GD EEx ia IIC T4 **CE**  
Can be carried either on the head or any kind of helmet.  
- Lighting by 3 high performance White LEDs.  
- 2 lighting levels (High: 3 LEDs on or low: 1 LED on).  
- Adjustable lamp height angle.  
- Very light, ABS body.  
- ATEX certified Categorie 2 (Zone 1)  
N° TRL03ATEX21005X.  
- Range: 10 to 15 meters.  
- Powered by 3 batteries LR03 (AAA).  
- Autonomy: 150 hours.  
- Strap: cloth or silicone rubber (for helmet).



**MS-126**

Delivered with batteries - Weight: 0,125Kg

**M-95-864**

Hooks set for helmet

Head and eyes protection

Insulating rubber gloves

Insulating mats and platforms

Arc flash equipment

Equipment for working on pole

## Insulating rubber gloves

Insulating rubber gloves conform to international IEC-60903 standard. To satisfy the requirements of this standard, they are subjected to dielectrical, mechanical resistance and ageing tests. The acceptance levels for mechanical tests are stricter. The tests are especially aimed at checking the tensile strength and elongation at break, the mechanical puncture test and tension set. Our gloves are made of latex especially treated to obtain high dielectric characteristics; they are individually tested and delivered in sealed plastic bags.



IEC-60903  
CE

Reference	Class	Voltage (V)	Thickness (mm)	Designation	Weight (g)
<b>CG-15 (*)</b>	1	7500	1.5	latex	270
<b>CG-20 (*)</b>	2	17000	2.3	latex	450
<b>CG-20 (*)-AM</b>	2	17 000	2	Two colors latex rolled edge	450
<b>CG-30 (*)</b>	3	26500	2.9	latex	560
<b>CG-30 (*)-AM</b>	3	26500	2.7	Two colors latex rolled edge	560

\* References to be completed by size A, B, C, D  
Correspondence with standard sizes: A = 8, B = 9, C = 10, D = 11

## Pneumatic glove tester

For compulsory control of gloves before use. Checking is done by inflating and immersing in water.



**CG-117** 140 x 150 x 160 mm - Weight: 0.600 kg

## Rubber gloves storage box with window

To be placed in high voltage stations. Insulating material, shock resistant, yellow colour. Transparent window (enables to check gloves presence). Bottle of talc included. Attachment: 4 holes 3.5 mm dia., centre distances 155 x 345 mm. U.V. protection window.



**CG-35/1** 60 x 210 x 460 mm - Weight: 0.730 kg

## Overgloves

Used as outer glove. Silicon grain leather, very flexible. Large protective cuff in chrome tanned hide. Adhesive strap.



EN 388  
CE

**CG-99 (\*)** Weight: 0.170 kg \* Add size: C, D

## Undergloves

Cotton undergloves To be used with insulating rubber gloves.



CE

**CG-80 (\*\*)** \*\* H: men / F: women

## Carrying bag

Made from reinforced waterproof fabric for transport of rubber gloves in vehicles and tool boxes. Rear loop for belt and snaps.



**CG-36** 60 x 180 x 400 mm - Weight: 0.120 kg

Head and eyes protection

Insulating rubber gloves

Insulating mats and platforms

Arc flash equipment

Equipment for working on pole

## Working gloves

Handling leather and cotton gloves. Docker type.



EN 388  
CE

**CG-97-C**

Single size (C = 10)

## Insulating boots

Made from elastomer canvas support, very flexible and resistant. Anti-perforation stainless steel sole and shell. Anti-slip sole. Protection against step and touch hazardous potential gradients.



EN 345

**MV-135\***

60 x 210 x 460 mm - Weight: 0.730 kg

\* Add sizes: 39-40/41-42-43/44-45-46/47.

## Insulating platform (indoor models)

Moulded insulating material, one-piece. Top 50 x 50 cm.



Reference	Rated insulation (V)	Height (mm)	Weight (kg)
<b>CT-7-25/1</b>	24000	220	3.7
<b>CT-7-40/1</b>	40000	260	3.8

## Insulating platform (outdoor models)

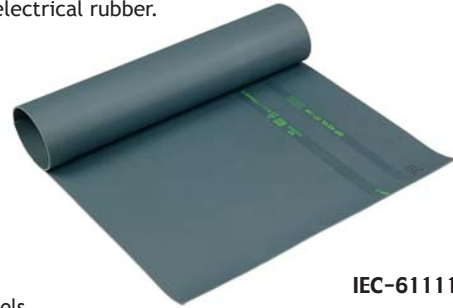
Solid plate with moulded insulating material 52 x 52 cm, thickness 40 cm. Feet with rubber tips.



Reference	Rated insulation (V)	Number of skirts per foot	Height (mm)	Weight (kg)
<b>CT-9-25</b>	24000	2	350	6.00
<b>CT-9-45</b>	45000	3	435	6.50

## Insulating mats

The matting is manufactured of elastomer compounds with slip-resistant surface. High quality dielectrical rubber.



IEC-61111

Individual models.

Reference	Thickness (mm)	Class	Network Voltage (kV)	Dimensions (m)
<b>MP-42/11</b>	3	3	≤ 26.5	1 x 1
<b>MP-42/16</b>	3	3	≤ 26.5	0.6 x 1
<b>MP-42/66</b>	3	3	≤ 26.5	0.6 x 0.6

For placing in front of panels.

Reference	Thickness (mm)	Class	Network Voltage (kV)	Dimensions (m)
<b>MP-60/03-5</b>	3	3	≤ 26.5	0.6 x 5
<b>MP-60/03-10</b>	3	3	≤ 26.5	0.6 x 10
<b>MP-100/03-5</b>	3	3	≤ 26.5	1 x 5
<b>MP-100/03-10</b>	3	3	≤ 26.5	1 x 10
<b>MP-60/05-5</b>	5	4	≤ 36	0.6 x 5
<b>MP-60/05-10</b>	5	4	≤ 36	0.6 x 10
<b>MP-100/05-5</b>	5	4	≤ 36	1 x 5
<b>MP-100/05-10</b>	5	4	≤ 36	1 x 10

## Bags for insulating mats

Specially designed for carrying and protecting insulating mats. Equipped with a shoulder strap and a plastic window for instructions and storage identification.



**MP-01**

For MP-42/16 and MP-42/66 - Length: 70 cm

**MP-02**

For MP-42/11 - Length: 110 cm

## Multi-pockets electrician bag

Specially designed for carrying and protecting insulating mats, face shield and controllers. Equipped with several pockets.



**M-87386**

65 x 15 x 25 cm

In many countries regulations have been established to protect workers from electrical shock and flash hazards in specific areas within which arc flash protection is required. These equipment must be used with insulating gloves and leather overgloves. Equipment up to 100 cal/cm<sup>2</sup> on request.

## Arc flash face shield kit (10cal/cm<sup>2</sup>)

Composition of the kit:

- 1 Face shield with chin cup 10cal/cm<sup>2</sup>, absorbs > 99.9% of harmful UV radiation, 70% light transmission, tested to ASTM F2178 specifications
- 1 ABS helmet electrically insulated EN397, EN 50365, ANSI Z89.1, 20kV.
- 1 carrying bag for face shield and helmet



**KIT-ARC-01**

Weight: 2.1 kg

## Arc flash jacket kit (11cal/cm<sup>2</sup>)

Composition of the kit:

- 1 Face shield with chin cup 10cal/cm<sup>2</sup>, absorbs > 99.9% of harmful UV radiation, tested to ASTM F2178 specifications
- 1 ABS helmet electrically insulated EN397, EN 50365, ANSI Z89.1, 20kV.
- 1 safety glasses EN 166/EN 170
- 1 arc flash protective jacket 11cal/cm<sup>2</sup> (size L\*), ASTM F1506 and NFPA 70E Standards
- 1 carrying bag for face shield and helmet
- 1 all kit carrying bag



**KIT-ARC-02**

Weight: 4.15 kg

## Arc flash protective coverall kit (11cal/cm<sup>2</sup>)

Composition of the kit:

- 1 Face shield with chin cup 11cal/cm<sup>2</sup>, absorbs > 99.9% of harmful UV radiation, tested to ASTM F2178 specifications
- 1 ABS helmet electrically insulated EN397, EN 50365, ANSI Z89.1, 20kV.
- 1 safety glasses EN 166/EN 170
- 1 arc flash protective Hood (15 cal/cm<sup>2</sup>)
- 1 protective coverall 11cal/cm<sup>2</sup> (size L\*), ASTM F1506 and NFPA 70E Standards
- 1 carrying bag for face shield and helmet
- 1 all kit carrying bag



**KIT-ARC-03**

Weight: 4.03 kg

## Arc flash protective hood kit (40cal/cm<sup>2</sup>)

Composition of the kit:

- 1 arc flash protective hood with an integrated face shield 40cal/cm<sup>2</sup>, ASTM F2178 and NFPA 70E Standards
- 1 arc flash protective coat 40cal/cm<sup>2</sup>, (size L\*), ASTM F1506 and NFPA 70E Standards
- 1 arc flash protective bib overall 40cal/cm<sup>2</sup>, (size L\*), ASTM F1506 and NFPA 70E Standards
- 1 ABS helmet electrically insulated EN397, EN 50365, ANSI Z89.1, 20kV.
- 1 safety glasses EN 166/EN 170
- 1 carrying bag for face shield and helmet
- 1 all kit carrying bag



**KIT-ARC-04**

Weight: 6.7 kg

\* Size US: L  
Other size on request.

Head and eyes protection

Insulating rubber gloves

Insulating mats and platforms

Arc flash equipment

Equipment for working on pole

## Pro electric full body fall arrest harness

2 fall arrest attachment point: dorsal and sternal. Automatic buckles of the belt and leg loops. Elastic shoulder straps. Padded leg loops. A work positioning belt, with a comfortable and lightweight pad. 2 buckles of work positioning Belt. Leg loops and shoulder straps adjustable. Polyamide straps. Tools holders. 3 sizes : S, M, XL. Delivered in a protective bag with a users manual. Weight: 2.7 kg.



EN 358  
EN 361  
CE

**MO-563(\*)**

\* add size: S/M/XL  
S = small M = medium XL = large

## Pro electric full body fall arrest harness

4 fall arrest attachment point : one dorsal point, two sternal points by two metallic D rings, a sternal point by strap. A ventral attachment point for a descender and / or lanyard. Automatic buckles of leg loops. Padded leg loops. A work positioning belt, with a comfortable and lightweight pad. 2 buckles of work positioning Belt. Leg loops and shoulder straps adjustable. Polyamide straps. Tools holders. 3 sizes : S, M, XL. Delivered in a protective bag with a users manual. Weight: 2.9 kg.



EN 358  
EN 361  
EN 813  
CE

**MO-564(\*)**

\* add size: S/M/XL  
S = small M = medium XL = large

## Full body fall arrest harness

2 fall arrest attachment point : dorsal and sternal. A work positioning belt, with a comfortable and lightweight pad. 2 buckles of work positioning Belt. Leg loops and shoulder straps adjustable. Polyamide straps. Unique size. Delivered in a protective bag.



EN 358  
EN 361  
CE

**MO-71**

Weight: 1.9 kg

## Equipped rope straps with lever stretcher

Equipped with adjuster. Hooks to belt with rapid link.



EN 358  
CE

**MO-52-L**

Length: 4 m - Weight: 1 kg

## Anti-fall grip

The safety block runs freely on its rope but can be automatically locked in case of a sudden downward drop. Must be used only with special 15 mm Ø rope delivered with the device.



EN 353-3  
CE

**MO-68/10**

With 10 m of rope - Weight: 2.300 kg

**MO-68/15**

With 15 m of rope - Weight: 3.250 kg

## Double safety descent device

Articulated stainless steel cam. Aluminium housing. High-resistance handle. Operates with 9-12 mm diameter lanyard. Ideal for evacuation. Lets you regulate descent.



EN 361  
CE

**MD-02**

Weight: 0.32 Kg

## Tether rope with energy absorber

Tether rope in polyamide Ø14 mm.



EN 355  
CE

**MO-52020**

Length: 1.50 m

**MO-52021**

Length: 2.00 m

## Double tether rope with energy absorber

Double tether rope with energy absorber Equipped with 2 steel snap hooks with automatic locking and 1 steel snap hook with screwing locking



EN 355  
CE

**MO-54010**

Length: 1.20 m - Weight: 1.4 kg

Head and eyes protection

Insulating rubber gloves

Insulating mats and platforms

Arc flash equipment

Equipment for working on pole

## Snap hooks (stainless steel)



MO-54

EN 362  
CE

**MO-54**

Locks with threaded ring - Opening: 15 mm  
100 x 58 mm - 0.154 kg



MO-55/1

EN 362  
CE

**MO-55/1**

Locking by screwing ring on a spring loaded mobile catch; an additional catch is provided to prevent the rope from slipping in the carabiner - 155 x 75 mm - 0.140 kg

## Snap hooks (aluminium alloy) zical



MO-54000

EN 362

**MO-54000**

Oval snap hook - Opening: 15 mm  
Individually tested - Weight: 0.071 kg  
110 x 58 mm



MO-54004

CE

**MO-54004**

D-shaped snap hook with automatic locking  
Opening: 23 mm - Individually tested  
Weight: 0.087 kg - 120 x 72 mm

## Fall arrester - retractable type

Designed for lineman safety. Quick acceleration causes instant locking. Corrosion protected steel shell. Integrated braking mechanism and dissipating element. Self locking mechanism and automatic tensioning and return facility. Galvanized cable Ø 4 mm. Strength: 1 200 daN. Delivered with a screw crab. Max. length: 10 m.



EN 360

**MO-591002**

Weight: 7.00 kg

## Snap hook with double safety latch



EN 362  
CE

Opening: 50 mm  
Body in steel  
Fingers in stainless steel  
Resistance: 20 kN.

**MO-54002**

Weight: 0.390 Kg

## Tether rope equipped with a tension device

The tether rope is intended to ensure that operators are held in position when working at a height. This tether rope must be associated with a harness belt. Ends sewn to form an attachment and protected with a plastic girdle. Static resistance: 15 kN. Polyamide Ø 15 mm.



EN 358  
CE

**MO-56009**

Weight: 1.425 kg - Length: 3 m

**MO-56010**

Weight: 1.600 kg - Length: 5 m

## Safety rope with wear tell tales

Rope: 14 PEPT multi-filament (15 mm diam.)  
Two-colour safety rope, 100% polyester made of 3 white strands with black central thread (wear telltale).  
Buckle: Polyamide central lug attaches to snap-hook of belt.



EN 354  
CE

**MO-052**

Safety rope only - Length: 4 m - 0.76 kg

## Lanyard

Synthetic fibre ropes - 10 mm. Loops spliced at both ends. Delivered without snap hook.



EN 354  
CE

**MO-53**

Length: 1.50 m - Weight: 0.125 kg

Head and eyes protection

Insulating rubber gloves

Insulating mats and platforms

Arc flash equipment

Equipment for working on pole

### Anti fall device with automatic release strap

Winder with self-locking strap.  
Length: 2 m.  
Equipped with shock absorber.  
Allows 2 m of movement autonomy around anchoring point.



EN 360

**MO-591000** Weight: 1.160 kg

### Constraint tie

Tie in polyamide.

EN 795  
CE



**MO-52031** Length: 0.8 m - Weight: 0.100 kg

**MO-52033** Length: 1.20 m - Weight: 0.135 kg

**MO-52034** Length: 1.50 m - Weight: 0.150 kg

### Snap hook with stick adapter

Reference	Characteristics	
<b>MO-54005</b>	Opening: 50 mm	Weight: 0.500 kg
<b>CE-5-90-C</b>	Length: 9 m max.	Weight: 4 kg

\* Other length, see page 89.



### Working on pole kit



Reference	Use
KIT-HAUT-01-(*)	To go up a pole with insulating ladders
KIT-HAUT-02-(*)	To go up a pole with spliced ladders
KIT-HAUT-03-(*)	To go up a catenary
KIT-HAUT-04-(*)	To go up on a pylon
KIT-HAUT-05-(*)	To go up on a roof
KIT-HAUT-06-(*)	To go up using a nacelle

Composition	KIT-HAUT-					
	01-(*)	02-(*)	03-(*)	04-(*)	05-(*)	06-(*)
Harness <b>MO-563</b>	■	■	■			
Harness <b>MO-564</b>				■		
Harness <b>MO-71</b>					■	■
Tether rope <b>MO-52020</b>	■					■
Double tether rope <b>MO-54010</b>		■		■	■	
Constraint tie <b>MO-52034</b>	■	■				
Constraint tie <b>MO-52031</b>				■ (2)		
Tether rope with tension device <b>MO-56009</b>	■	■	■	■	■	
Anti-fall grip <b>MO-68/15</b>	■	■	■	■		
Snap hook <b>MO-54</b>	■	■				
Carrying bag <b>M-87-295</b>	■	■	■	■	■	■

(\* add size : M or XL  
order example : KIT-HAUT-02-XL.

Head and eyes protection

Insulating rubber gloves

Insulating mats and platforms

Arc flash equipment

Equipment for working on pole

## Insulating ladders

A complete range with top quality features: Insulation between two steps: 30000 V (test performed after immersion in water for 24 hours). High mechanical resistance to bending and twisting. Good resistance/weight ratio. High fire resistance. High resistance against bad weather and corrosive elements. Lateral risers in polyester/glass fiber rectangular section 70 x 25 mm. Aluminium alloy rungs with square 29 x 29 mm section and anti-slip coating.



EN 131  
CE

## Insulating 2 section extension ladders, hand operated

Reference	Folded length	Extended length	Number of rungs	Weight (kg)
<b>MP-514/2</b>	2.41 (m)	4.09 (m)	2 x 8	13.9
<b>MP-515/2</b>	2.97 (m)	5.21 (m)	2 x 10	17

## Insulating 2 section extension ladders, rope and pulley operated

<b>MP-506/2</b>	3.53 (m)	6.05 (m)	2 x 12	20
<b>MP-508/2</b>	4.66 (m)	8.30 (m)	2 x 16	31
<b>MP-510/2</b>	5.78 (m)	10.26 (m)	2 x 20	38



## Forged steel climbers for round wooden poles

Hard forged steel - Leather belts with cast buckles. Delivered by pair.



<b>MO-24</b>	Ø 20 cm - 2.6 kg - Pair of climbers
<b>MO-25</b>	Ø 25 cm - 2.8 kg - Pair of climbers
<b>MO-26</b>	Ø 30 cm - 3.0 kg - Pair of climbers
<b>MO-35</b>	Ø 35 cm - 3.2 kg - Pair of climbers

## Mechanical climbers for round and hexagonal concrete poles

Manual locking  
Adaptable to the pole diameter  
For poles Ø 140 to 300 mm.



<b>MO-16-A</b>	Pair of climbers - Weight: 6.5 Kg
----------------	-----------------------------------

## Mechanical climbers for rectangular shaped concrete poles

Automatic locking of jaws by elastic cord.  
Sole in aluminium alloy, high resistance, with leather belts and steel buckle.  
Wear plate placed on sole arm.  
Mobile drum on axis can be removed; processed steel rollers.  
High resistance aluminium alloy rack, used for clamping onto poles 14 to 42 cm wide.



Spare parts:  
**MO-17-01:** pair of elastic cords  
**MO-17-02:** pair of wear plates  
**MO-17-03:** blade roller  
**MO-17-04:** pair of runners

<b>MO-17-A</b>	Pair of climbers - Weight: 9 kg
----------------	---------------------------------

## Climbers for H profile metallic poles

Hard forged steel.  
Delivered by pair.



<b>MO-23</b>	Pair of climbers - Weight: 5.10 kg
--------------	------------------------------------

## Safety glasses

Protection against UV radiation and ejections of solid particles. Grilamid frame in orange Softflex. Anti-scratch, anti-impact and anti-chemical product treatments. Caution: Do not use for welding operations.

EN 166/EN 170  
CE



MO-11000



MO-11001

**MO-11000** Clear lenses, delivered in pouch

**MO-11001** Tinted lenses, delivered in pouch

## Overglasses

Polycarbonate overglasses. Protection against UV radiation and ejections of solid particles. Caution: Do not use for welding operations.

EN 166/EN 170  
CE



MO-11010



MO-11011

**MO-11010** Clear lenses

**MO-11011** Green tinted lenses

## ABS helmet

Electrically insulating helmets for use on low voltage installations. Safety industrial helmet, safety helmet for electrical use, especially designed to maximize wearer's comfort. Standard sizes 53 to 63. Leather trim 21 cm along the inside for added comfort. Multiple adjustments for a perfect fit - headband: adjustable in 3 mm increments. Built-in cushion for optimum ventilation. Safety chin strap: fastenings to shell tear resistant. Weight: 0.300 kg.

EN 397  
EN 50365  
ANSI Z89.1:2003  
Class E 20 kV  
CE



**MO-182/1-B** White

**MO-182/1-R** Red

## Face shield

Face shield adjustable on MO -182 helmet. 100% UV protection. Weight: 0.170 kg. Caution: Do not use for welding operations.

EN 166/EN 170  
CE



**MO-184** Single size, adjustable by rubber band

## Helmet with built-in face shield

Panoramic face shield in non-scratch and anti-mist polycarbonate. Chinstrap (with Velcro fastening) Head fit adjustment by milled wheel. Single size: 0.270 kg.

EN 166/EN 170/EN 397  
EN 50365  
CE



## Polycarbonate helmet

Polycarbonate helmet. Shock and wear resisting, comfortable. Adjustable size from 53 to 63 cm. Weight: 0,465 Kg.

EN 397  
CE



**MO-183-BL** White, single size, adjustable

**MO-183-RL** Red, single size, adjustable

**MO-185-BL** White

**MO-185-R** Red

**MO-185-J** Yellow

**MO-185-B** Blue

**M-881622** Spare face shield for MO-185

Head and eyes protection

Insulating rubber gloves

Insulating mats and boots

Equipment for working on pole

## Headlamp with adjustable focus

Can be carried either on the head or any type of helmet. **CE**  
Lighting control and beam by switches.  
Range: 30 meters.  
Adjustable lamp height angle.  
Sealed against rain.  
Powered by 4 batteries LR 6.  
Autonomy: 6 hours.  
Standard bulb 4.8 V/0.3 A.



**MS-118**

Headlamp - Weight: 0.187 kg

**M-95-865**

Halogen bulb (sold by set of 5 units)  
5.2 V 0.5 A

**M-95-864**

Hooks set for helmet

## LED's Headlamp (3 LED's)

Can be carried either on the head or any kind of helmet. **CE**  
- Lighting by 3 high performance LEDs.  
- 3 lighting levels.  
- Adjustable lamp height angle.  
- Very light, waterproof IP65.  
- Range: 10 to 15 meters.  
- Powered by 3 batteries LR03 (AAA).  
- Autonomy: 80 hours.



**MS-121**

Delivered with batteries and a carrying bag  
Weight: 0.09 Kg

**M-95-864**

Hooks set for helmet

## LED's headlamp (5 LED's)

LED's Headlamp (5 LED's). **CE**  
Can be carried on the head or any kind of helmet.  
Lighting by 5 high performance white new generation LED's - 3 lighting levels + 1 flash mode + 1 red lighting.  
IPX6.  
Powered by four batteries LR06 (AA).  
Range : 30 meters.  
Autonomy : 100 hours.



**MS-127**

Delivered with batteries and a carrying bag  
Weight: 226 g

**M-95-864**

Hooks set for helmet

## Intrinsically safe ATEX LED's Headlamp

**Ex** II 2GD EEx ia IIC T4 **CE**  
Can be carried either on the head or any kind of helmet.  
- Lighting by 3 high performance White LEDs.  
- 2 lighting levels (High: 3 LEDs on or low: 1 LED on).  
- Adjustable lamp height angle.  
- Very light, ABS body.  
- ATEX certified Categorie 2 (Zone 1)  
N° TRL03ATEX21005X.  
- Range: 10 to 15 meters.  
- Powered by 3 batteries LR03 (AAA).  
- Autonomy: 150 hours.  
- Strap: cloth or silicone rubber (for helmet).



**MS-126**

Delivered with batteries - Weight: 0,125Kg

**M-95-864**

Hooks set for helmet

Head and eyes protection

Insulating rubber gloves

Insulating mats and boots

Equipment for working on pole

## Insulating rubber gloves

Insulating rubber gloves conform to international IEC-60903 standard. To satisfy the requirements of this standard, they are subjected to dielectrical, mechanical resistance and ageing tests. The acceptance levels for mechanical tests are stricter. The tests are especially aimed at checking the tensile strength and elongation at break, the mechanical puncture test and tension set. Our gloves are made of latex especially treated to obtain high dielectric characteristics; they are individually tested and delivered in sealed plastic bags.



IEC-60903

Reference	Class	Voltage (V)	Thickness (mm)	Designation	Weight (g)
<b>CG-30 (*)</b>	3	26500	2.9	latex	560
<b>CG-30 (*)-AM</b>	3	26500	2.7	Two colors latex rolled edge	530
<b>CG-40 (**)</b>	4	36000	3.6	latex	800
<b>CG-40 (**)-AM</b>	4	36000	3	Two colors latex rolled edge	650

\* References to be completed by size B or C.  
 \*\* References to be completed by size C or D.

Correspondence with standard sizes: B = 9, C = 10, D = 11.

## Pneumatic glove tester

For compulsory control of gloves before use. Checking is done by inflating and immersing in water.



**CG-117** 140 x 150 x 160 mm - Weight: 0.600 kg

## Rubber gloves storage box with window

To be placed in high voltage stations. Insulating material, shock resistant, yellow colour. Transparent window (enables to check gloves presence). Bottle of talc included. Attachment: 4 holes 3.5 mm dia., centre distances 155 x 345 mm. U.V. protection window.



**CG-35/1** 60 x 210 x 460 mm - Weight: 0.730 kg

## Carrying bag

Made from reinforced waterproof fabric for transport of rubber gloves in vehicles and tool boxes. Rear loop for belt and snaps.



**CG-36** 60 x 180 x 400 mm - Weight: 0.120 kg

## Undergloves

Cotton undergloves To be used with insulating rubber gloves.



**CG-80 (\*\*)** \*\* H: men / F: women

## Overgloves

Used as outer glove. Silicon grain leather, very flexible. Large protective cuff in chrome tanned hide. Adhesive strap.



EN 388

**CG-99 (\*)** Weight: 0.170 kg \* Add size: C, D

## Working gloves

Handling leather and cotton gloves. Docker type.



EN 388

**CG-97-C** Single size (C = 10)

Head and eyes protection

Insulating rubber gloves

Insulating mats and boots

Equipment for working on pole

## Insulating mats

The matting is manufactured of elastomer compounds with slip-resistant surface. High quality dielectrical rubber.



Reference	Thickness (mm)	Dimensions (m)
<b>MP-60/10-5</b>	10	0.6 x 5
<b>MP-60/10-10</b>	10	0.6 x 10
<b>MP-100/10-5</b>	10	1 x 5
<b>MP-100/10-10</b>	10	1 x 10

## Insulating platform (outdoor model)

Solid plate with moulded insulating material 52 x 52 cm, thickness 40 cm. Feet with rubber tips.



Reference	Rated insulation (V)	Number of skirts per foot	Height (mm)	Weight (kg)
<b>CT-9-63</b>	63 000	4	515	7.00

## Insulating platform (indoor model)

Solid plate with moulded insulating material 52 x 52 cm, thickness 40 cm. Feet with rubber tips.



Reference	Rated insulation (V)	Height (mm)	Weight (kg)
<b>CT-7-63</b>	63 000	340	3.35

## Rescue sticks

Insulating sticks ended by a large hook in order to rescue quickly an electrified victim in case of accident.



<b>CS-90*</b>	Length: 2.05 m - Rated insulation: 90 kV
<b>CS-225*</b>	Length: 2.45 m - Rated insulation: 225 kV

\* Delivered with wall mounted supports.

Head and eyes protection

Insulating rubber gloves

Insulating mats and platforms

Equipment for working on pole

## Pro electric full body fall arrest harness

2 fall arrest attachment point: dorsal and sternal. Automatic buckles of the belt and leg loops. Elastic shoulder straps. Padded leg loops. A work positioning belt, with a comfortable and lightweight pad. 2 buckles of work positioning Belt. Leg loops and shoulder straps adjustable. Polyamide straps. Tools holders. 3 sizes : S, M, XL. Delivered in a protective bag with a users manual. Weight: 2.7 kg.



EN 358  
EN 361  
CE

MO-563(\*)

\* add size: S/M/XL  
S = small M = medium XL = large

## Pro electric full body fall arrest harness

4 fall arrest attachment point : one dorsal point, two sternal points by two metallic D rings, a sternal point by strap. A ventral attachment point for a descender and / or lanyard. Automatic buckles of leg loops. Padded leg loops. A work positioning belt, with a comfortable and lightweight pad. 2 buckles of work positioning Belt. Leg loops and shoulder straps adjustable. Polyamide straps. Tools holders. 3 sizes : S, M, XL. Delivered in a protective bag with a users manual. Weight: 2.9 kg.



EN 358  
EN 361  
EN 813  
CE

MO-564(\*)

\* add size: S/M/XL  
S = small M = medium XL = large

## Full body fall arrest harness

2 fall arrest attachment point : dorsal and sternal. A work positioning belt, with a comfortable and lightweight pad. 2 buckles of work positioning Belt. Leg loops and shoulder straps adjustable. Polyamide straps. Unique size. Delivered in a protective bag.



EN 358  
EN 361  
CE

MO-71

Weight: 1.9 kg

## Equipped rope straps with lever stretcher

Equipped with adjuster. Hooks to belt with rapid link.



EN 358  
CE

MO-52-L

Length: 4 m - Weight: 1 kg

## Anti-fall grip

The safety block runs freely on its rope but can be automatically locked in case of a sudden downward drop. Must be used only with special 15 mm Ø rope delivered with the device.



EN 353-3  
CE

MO-68/10

With 10 m of rope - Weight: 2.300 kg

MO-68/15

With 15 m of rope - Weight: 3.250 kg

## Double safety descent device

Articulated stainless steel cam. Aluminium housing. High-resistance handle. Operates with 9-12 mm diameter lanyard. Ideal for evacuation. Lets you regulate descent.



EN 361  
CE

MD-02

Weight: 0.32 Kg

## Tether rope with energy absorber

Tether rope in polyamide Ø14 mm.



EN 355  
CE

MO-52020

Length: 1.50 m

MO-52021

Length: 2.00 m

## Double tether rope with energy absorber

Double tether rope with energy absorber Equipped with 2 steel snap hooks with automatic locking and 1 steel snap hook with screwing locking



EN 355  
CE

MO-54010

Length: 1.20 m - Weight: 1.4 kg

Head and eyes protection

Insulating rubber gloves

Insulating mats and platforms

Equipment for working on pole

## Snap hooks (stainless steel)



MO-54

EN 362  
CE

MO-54

Locks with threaded ring - Opening: 15 mm  
100 x 58 mm - 0.154 kg



MO-55/1

EN 362  
CE

MO-55/1

Locking by screwing ring on a spring loaded mobile catch; an additional catch is provided to prevent the rope from slipping in the carabiner - 155 x 75 mm - 0.140 kg

## Snap hooks (aluminium alloy) zical



MO-54000

EN 362

MO-54000

Oval snap hook - Opening: 15 mm  
Individually tested - Weight: 0.071 kg  
110 x 58 mm



MO-54004

CE

MO-54004

D-shaped snap hook with automatic locking  
Opening: 23 mm - Individually tested  
Weight: 0.087 kg - 120 x 72 mm

## Fall arrester - retractable type

Designed for lineman safety. Quick acceleration causes instant locking. Corrosion protected steel shell. Integrated braking mechanism and dissipating element. Self locking mechanism and automatic tensioning and return facility. Galvanized cable Ø 4 mm. Strength: 1 200 daN. Delivered with a screw crab. Max. length: 10 m.



EN 360

MO-591002

Weight: 7.00 kg

## Snap hook with double safety latch



EN 362  
CE

Opening: 50 mm  
Body in steel  
Fingers in stainless steel  
Resistance: 20 kN.

MO-54002

Weight: 0.390 Kg

## Tether rope equipped with a tension device

The tether rope is intended to ensure that operators are held in position when working at a height. This tether rope must be associated with a harness belt. Ends sewn to form an attachment and protected with a plastic girdle. Static resistance: 15 kN. Polyamide Ø 15 mm.



EN 358  
CE

MO-56009

Weight: 1.425 kg - Length: 3 m

MO-56010

Weight: 1.600 kg - Length: 5 m

## Safety rope with wear tell tales

Rope: 14 PEPT multi-filament (15 mm diam.)  
Two-colour safety rope, 100% polyester made of 3 white strands with black central thread (wear telltale).  
Buckle: Polyamide central lug attaches to snap-hook of belt.



EN 354  
CE

MO-052

Safety rope only - Length: 4 m - 0.76 kg

## Lanyard

Synthetic fibre ropes - 10 mm.  
Loops spliced at both ends.  
Delivered without snap hook.



EN 354  
CE

MO-53

Length: 1.50 m - Weight: 0.125 kg

## Anti fall device with automatic release strap

Winder with self-locking strap.  
Length: 2 m.  
Equipped with shock absorber.  
Allows 2 m of movement autonomy around anchoring point.

EN 360



**MO-591000** Weight: 1.160 kg

## Constraint tie

Tie in polyamide.

EN 795  
CE



**MO-52031** Length: 0.8 m - Weight: 0.100 kg

**MO-52033** Length: 1.20 m - Weight: 0.135 kg

**MO-52034** Length: 1.50 m - Weight: 0.150 kg

## Working on pole kit



Reference	Use
KIT-HAUT-01-(*)	To go up a pole with insulating ladders
KIT-HAUT-02-(*)	To go up a pole with spliced ladders
KIT-HAUT-03-(*)	To go up a catenary
KIT-HAUT-04-(*)	To go up on a pylon
KIT-HAUT-05-(*)	To go up on a roof
KIT-HAUT-06-(*)	To go up using a nacelle

Composition	KIT-HAUT-					
	01-(*)	02-(*)	03-(*)	04-(*)	05-(*)	06-(*)
Harness <b>MO-563</b>	■	■	■			
Harness <b>MO-564</b>				■		
Harness <b>MO-71</b>					■	■
Tether rope <b>MO-52020</b>	■					■
Double tether rope <b>MO-54010</b>		■		■	■	
Constraint tie <b>MO-52034</b>	■	■				
Constraint tie <b>MO-52031</b>				■(2)		
Tether rope with tension device <b>MO-56009</b>	■	■	■	■	■	
Anti-fall grip <b>MO-68/15</b>	■	■	■	■		
Snap hook <b>MO-54</b>	■	■				
Carrying bag <b>M-87-295</b>	■	■	■	■	■	■

(\*): add size : M or XL  
order example : KIT-HAUT-02-XL.

Head and eyes protection

Insulating rubber gloves

Insulating mats and platforms

Equipment for working on pole

## Insulating ladders

A complete range with top quality features: Insulation between two steps: 30000 V (test performed after immersion in water for 24 hours). High mechanical resistance to bending and twisting. Good resistance/weight ratio. High fire resistance. High resistance against bad weather and corrosive elements. Lateral risers in polyester/glass fiber rectangular section 70 x 25 mm. Aluminium alloy rungs with square 29 x 29 mm section and anti-slip coating.



EN 131  
CE

## Insulating 2 section extension ladders, hand operated

Reference	Folded length	Extended length	Number of rungs	Weight (kg)
<b>MP-514/2</b>	2.41 (m)	4.09 (m)	2 x 8	13.9
<b>MP-515/2</b>	2.97 (m)	5.21 (m)	2 x 10	17

MP-506...

MP-514...

## Insulating 2 section extension ladders, rope and pulley operated

<b>MP-506/2</b>	3.53 (m)	6.05 (m)	2 x 12	20
<b>MP-508/2</b>	4.66 (m)	8.30 (m)	2 x 16	31
<b>MP-510/2</b>	5.78 (m)	10.26 (m)	2 x 20	38



# Services



Technical assistance



Training



Flexible workshop

## Ask our specialist



+33 1 42 31 46 24



[philippe.monteillet@catuelec.com](mailto:philippe.monteillet@catuelec.com)

High voltage